



June 2022

Supported by

Chelsfield Park Hospital

Part of Circle Health Group

St. Martin's Chelsfield Summer Fete
Saturday 11th June
 12 noon - 4.30pm
 Rectory Gardens, Skibbs Lane, Chelsfield BR6 7RH

Entry £1

Opening by the May Queen

Teas, BBQ, Ice cream, Games, Plants, Cakes, Tombola, Gifts, Toys, Bouncy Castle, Face Painting and much, much more!

Having a clear-out?

We are looking for donations of good quality, undamaged items to be sold on the bric-a-brac and toy stalls. (No clothing or books please). Please contact Anne on 07767 783189 or email: secretarypcc@stmartinchelsfield.org.uk

Thank you!
 Rectory Gardens, Skibbs Lane, Chelsfield BR6 7RH

The Newsletter and "What's On" Guide for Residents & Friends of Chelsfield Village

Hawk Moths	2
Chelsfield Village Fair	4
Ladies Down Under	7
Mutterings from The Millers	8
iCARE Quiz Night	9
Chelsfield Community Café	10
Orp. Symphony Orchestra	11
Jubilee at The 5 Bells	12
Fathers Day at The 5 Bells	13
Jubilee at The BoPeep	14
St Martin's Toddlers Group	15
Gin Week at The BoPeep	16
St Martin's Services Calendar	17
What's On at The Chelsfield	18
A Farewell Message	18
Open Garden Scheme	19
Local History Group	19
School Facilities to Hire	21
View From The Rectory	22
ULEZ	22
Bore Place June Events	23
WANTED for Foodbank	24
Platinum Tree Blessing	25
Kent Heights Flower Club	26
Bromley Buzz Podcast	26
Bromley Arts Festival	27
Dates for your Diary	28
Recycling Collection Days	28

KEEP US INFORMED

SEND ANY NEWS, ARTICLES AND DIARY DATES FOR INCLUSION IN THE JULY 2022 ISSUE TO:

chelsfieldvillagevoice@gmail.com

to arrive on or before
Monday 27th June 2022

Hawk Moths

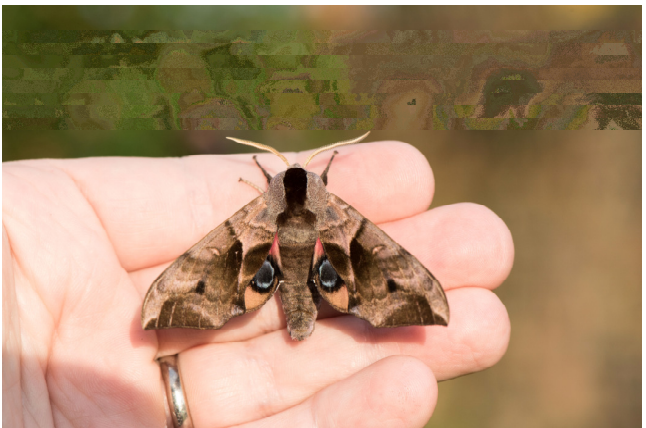
I see on the BBC there has been a call for gardeners to refrain from cutting their grass during the month of May. The idea is to allow the flowers on your lawn to grow and give bees and other insects the opportunity to feed. You then cut your grass in early June somewhat like the old custom of maintaining flower meadows. Well, that's the excuse I'm using during the month of May...

In early May the local blue-tits took up residence in the cottage gardens but only one of the four available bird boxes is being used albeit they chose the best available. As an estate agent might say: it's a 'new build' property with a northern aspect across the gardens. It has cold running water only 5 yards from its front door in the form of a newly installed aerated pond and is well insulated with a weather friendly shed over-hang that keeps the rain off. Stop-press! They fledged on the 26th May.

This month I want to write about 'hawk moths' – aided and abetted by our

local moth fancier Lester Barnes who knows far more about these critters than me – and supplied the photos. I've attached a photo of his kit called a 'Robinson light trap' which has a strong mercury vapour lamp. This generates ultra-violet light and when set up on a pleasant evening attracts most types of moth frequenting his garden. Lester then photographs any interesting examples. Lester owns half of the piece of open land on the

left hand side of the lane as you enter the village from the new roundabout. In pursuit of his hobby he's planted a small apple orchard plus hedging material and plants that encourage butterflies and moths. Over a number of occasions he's seen a total of seven 'Eyed hawk moths' (*Smerinthus ocellata*), named because of two marking on their wings that look like a pair of eyes, in his orchard (see photos of moth and caterpillar). These moths gain protection by using their eye like markings to appear like a far larger animal than they really are. A sudden flash of the wings can startle a predator and save the day! When Lester found these moths on his young





saplings he moved them to other established mature trees of the same species in the hope of encouraging their numbers without damaging his trees. This moth is generally quite uncommon in these parts and Lester tells me that he only seems to record these moths between the dates of the 6th and 13th June each year and is looking forward to some new discoveries soon! Another interesting moth that Lester has only found once in seven years here in Chelsfield is the Garden Tiger moth (*Arctia*

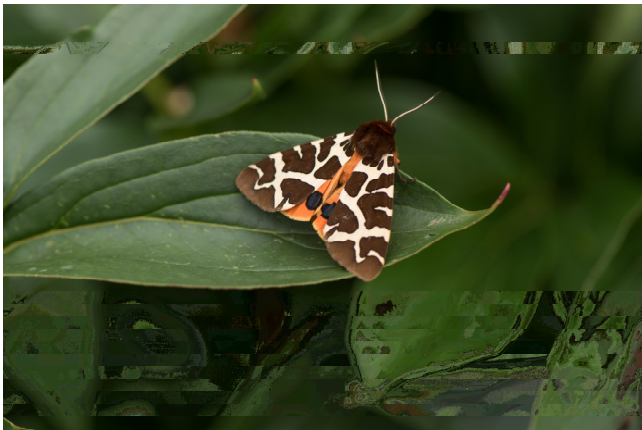
caja – see photo of moth with tiger like markings). Like the eyed hawk moth it has two hidden eye markings but also the ability to exude a noxious red fluid to drive off predators. Other species of tiger moths have developed specialised defence mechanisms. One involves the moth playing dead when it detects a bats sonar location signals. It simply draws in its wings and falls to the ground making it difficult for a bat to anticipate the moths new flight plan! Once on the ground it is effectively invisible to a bat. Another, rather larger tiger moth has the ability to transmit its own sonar signal which has the effect of interfering with the bat's signal and so has its own 'counter-measures' which 'jams' the bat's own sonar

system.

Other types of tiger moth found by Lester in Chelsfield include: Ruby tigers and the immigrant species Jersey and Cream Spot tiger moths. Hawk moths include: Privet, Poplar, Elephant, Small Elephant, Pine, Lime, and the Hummingbird moth.



One last story regaled by Lester involves him trying to attract, without success a moth called an Old Lady moth (*Mormo maura*) - see photo grey moth. In seven years he failed to find one with his light trap but while drinking in the Five Bells he found one flapping about the lights. Some moths are more attracted to smells and this can be used to attract them in a similar fashion to the light trap. Lester thinks that the aroma of beer may have attracted the moth through the open door.



Chelsfield Village Fair - Saturday 9th July 2022

Chelsfield Village Fair

Saturday 9th July 2022

Gates open 12 noon Music till 6:30pm

Adults £5 Children £2 Under 5s FREE

(on the gate or on-line)



Flying Displays financed by Chelsfield Flying Club



All the fun of the Fair!

Flying Displays from an Extra 330SC, a De Havilland Dragonfly and a Spitfire

Displays subject to weather, serviceability and CAA permissions

Flying Displays

Force 10 Big Band

Croydon Steel Orchestra

Savage Skills Bike Stunt Team

Beer Tent


Food

Market

Fun Fair

Pony Rides

Over 70 stalls

Find us on 

Raising funds for Living On Bereavement Service and local good causes



www.chelsfieldfair.com

Chelsfield Cricket Green Bucks Cross Road Chelsfield Village BR6 7RL

Terrifyingly, it's just a month away from not only the largest event in Chelsfield this year, but the largest event in Chelsfield since July 2019. Kicking the machine back into life hasn't been quite as difficult as we'd feared; it turns out that we're reasonably well organised and not that forgetful. What has been a bit of a shock has been how low on funds we are and that's kind of exacerbated by the three year gap and having to make some major capital purchases. A lot of our bar equipment has seen better days and another miniature army of traffic cones has assembled in the pavilion, as an example. We'll survive but our treasurer David Padilla will be drinking heavily between now and then to calm his nerves.

On the entertainment front we can confirm participation by some of our favourites: Croydon Steel Orchestra with their summery sounds, a parade by the Orpington May Queen and her troops, Chelsfield Equestrian Centre's pony

rides and the ever fabulous Force 10 Big Band. New this year is the Savage Skills Bike Stunt Team who will do at least a couple of performances in the arena and then there is the main draw, the flying display.

For me this has been quite stressful in that the Civil Aviation Authority refuse to let me act as Flying Display Director (FDD) due to our not having staged an air show in the last two years. Pretty much like nearly every other FDD - exasperating, given the circumstances. At one point this up the entire air show in jeopardy but fortunately the Vice President of the British Air Display Association, Barry Neal, offered to act as FDD in order to save our show. To say I'm indebted is an understatement. I will act as CAA Event Organiser so will have to do all the normal donkey work ensuring the Flying Display Area is safe etc., but Barry will be the man in charge. Thank you sir!

And on the subject of

money and flying (were we? Well we are now!), the Chelsfield Flying Club 2022 is now open for business. If you're new to the village or have been living under a rock, allow me to clarify. The Village Fair takes place in a village with between 40 and 50 houses in it. It takes place on a modestly sized cricket ground and yet it attracts between four and five thousand people every year. Having a three item flying display is unjustifiable financially as it costs at least £5,000 to put on, but, ever since 2008, Chelsfield Flying Club has come to the rescue. Its members are anyone who has a bit of spare cash and likes seeing a Spitfire etc. thundering around on Fair day and doesn't want the local good causes and headline charity (Living On Bereavement Service this year) to lose out just because we want an absolutely mad Fair.

What do you get in return for your donation? Nothing



much materially to be honest. You get a membership card on a lanyard which entitles you to free entrance. You get listed on the website, in the programme, on social media and thanked by me over the PA system. But most importantly, you are part of an annual tradition which makes Chelsfield's Fair one of the best summer events in the South East.

VIP Membership costs £100 and you can pay via a number of startlingly up to date methods and some less so:

Bank transfer:

Sort Code: **20-18-93**
Account No: **03750027**
Account Name:
Chelsfield Village Fair

On-line at:

flying.chelsfieldfair.com

Cash given to Dave Griffiths

Cheque made payable to '**Chelsfield Village Fair**' - please make sure

you write *Chelsfield Flying Club* on the back of your cheque. You can give these cheques to Dave Griffiths, Sharon King, David Padilla or send/hand deliver to:

**4 Orlestone Gardens,
Chelsfield Village,
Kent, BR6 6HB**

I look forward to hearing from you and in return you will be key to two of the best display pilots in the world displaying three amazing aircraft throughout the afternoon.

Ok I'll shut up now!

The usual food stalls, tea rooms and beer tent will be back, along with the Fun Fair and huge market of various traders. We still have pitches if you're interested; just email:

trading@chelsfieldfair.com

and Maria will sort you out.

We will also have some vintage tractors and goodness knows what else by the time the day comes. One dramatic change will be our ability

to take contactless payment and we're even selling tickets on line in advance, which is frightfully modern! Just check out the website for those details.

Finally, we will be having our traditional Prize Draw, proceeds from which go directly to our headline charity and tickets for this will be on sale in the next few days. If someone approaches you and asks you to buy some, assume that they're violent sociopaths and avoid arguing; a gentle opening of the wallet should keep you safe.

The team and I look forward to seeing you on the day and I will have more news for the July edition. In the meantime follow us on Facebook and check out the website.

Dave Griffiths
Chelsfield Village Fair
2022

admin@chelsfieldfair.com
07796 696065
chelsfieldfair.com
facebook.com/chelsfieldfair



*Chelsfield Village Hall,
Bucks Cross Road, BR6 7RL
Box Office-07549 012140*



www.ticketsource.co.uk/chelsfieldplayers

21st-23rd July at 8pm

doors open 7.30pm

£10 tickets



**The
Chelsfield Players
presents...**



**By Amanda Whittington
Directed by Sabrina Bell**



An amateur production in association with Nick Hern books

Mutterings From The Millers

I know we need some rain but my goodness it didn't want to stop. Some of the showers during May were really heavy and I did hear of some hailstones falling in Sevenoaks.

Fortunately the rain hasn't knocked down the grass which has just come into ear and growing well. We hope to cut this about the end of June or beginning of July and then stack it in the new barn. You may have noticed that the vandalised poly tunnel has been taken down and the land cleared and marked out with old straw bales, that is where the new barn will be erected. We obtained planning permission some months ago but hope the building will be ready in time for the hay harvest. Building materials are still a bit short but the steel prices have shot through the roof recently so waiting lists for erection of buildings is quite long.

On the subject of hay, did you notice our crop circle? I was driving along Church Road in April and noticed someone in the

field between Church Road and the bypass with a large strimmer. I couldn't believe my eyes that someone was out there cutting down the grass. Needless to say I pulled over in the lay-by and asked him what he was doing to which he answered that he was cutting the grass. I explained about the crop but he didn't seem to think anything was growing there so it was ok to do what he wanted. I don't like confrontation but the steam was starting to come out of my ears and I politely explained that this is what it should look like in April. Apparently he had tried to find the owner to use the field but he couldn't find anyone and thought the field wasn't being used. Guess what he was doing wait for it, I was speechless when he said that he had been flying his helicopter through the winter months and as the grass was growing it was getting in the way of him landing his helicopter so he was cutting a large circle! !!!!!!!!!!!!!!! I thought people having picnics with blankets

spread onto the crop was bad enough but this really takes the biscuit.

Fortunately the grass soon grew and is as high as the rest of the field.

The Avian flu restrictions were lifted on the 2nd May, so safe let the hens out now.

There is not a lot to see about the farm as we are no longer growing wheat and barley but it is great that we don't have to adhere to all the rules and regulations to grow cereals or have an annual inspection. We continue to see all the various birds in the garden and had blue and great tits nesting here together with house sparrows. Pied wagtails in the yard and swallows in the barn. The first swallow arrived on the 23rd April, later that usual but sorry to report that only 2 arrived. Swifts flying higher up and most days buzzards soaring in pairs. We were lucky enough to see two red kites together over the farmhouse at the end of May. A bird that I hadn't been able to identify until recently has been singing



As usual there are quite a few weather sayings for the summer months, when you hear clicking, it could be pine cones opening when good weather is coming. In dry weather, pine cones dry out which causes their scales to stand out with a more 'open' appearance. In wet weather, the scales curl up and the cones return to a more closed shape.

Of course we mustn't forget St. Swithin's Day 15th July

St. Swithin's Day, if it does rain

Full forty days, it will remain,

St. Swithin's Day if it be fair

For forty days, t'will rain no more

*Chris Miller
Court Lodge Farm*

away in the garden and hedgerow, a common whitethroat. Not very common to me but such a delight to know that they are here.

The five deer that have been with us during winter are not so easy to

spot with the grass growing taller but still catch a glimpse when they raise their heads and when they bound off. Lovely too to see the wild flowers in the hedgerow including the wild rose climbing through the trees.

Quiz Night



Tickets £10 per head and teams of up to 6 people.

Bring your own refreshments.

Quiz night
Saturday 18th June 2022.
7.15 pm start.

St Mary's Church Hall,
Worlds End Lane,
Green Street Green.

To book please call
01689 862883.

Chelsfield Community Café - Facebook Post

BR6Life
20 May at 05:30 ·

🌸 Flower Friday 🌸

Congratulations to all the volunteers at The Chelsfield Community Cafe who received this month's gorgeous bouquet thanks to [Sweet Pea Florist](#).

The Chelsfield Community Cafe runs twice a month and is based in Chelsfield Village, Village Hall (by the cricket club), based purely on local volunteers it brings the young and elderly together for a couple of hours to interact with each other, chat, & have fun, an idea bought to fruition when

lockdown was eased to help those with loneliness and isolation.

🌸 It has proven very popular with friendships blossoming, all kinds of entertainment now being added (the Bromley Carers Choir, were there singing when I surprised them) and of course let's not forget the delicious homemade cakes that get donated to.

🌸 The Chelsfield Community Cafe runs 2.30- 4.30 every 1st and 3rd Wednesday of the month.

There is also a pick and drop off service for those

who may need it. (Message me if you would like more information).

🌸 I have been a few times to the CCC and my heart warms seeing the animated conversations, the buzz of chatter and enjoyment on the faces of whom frequent, for some this is the highlight of their week.

🌸 Congratulations to everyone involved with this lovely community cafe. If you would like more information then do drop me a message.

[#FlowerFriday](#) [#LoveLoc](#)





ORPINGTON SYMPHONY ORCHESTRA

Saturday 18th June 7:30pm

72nd Season

Weber

Overture "Preciosa", Op.78

Weiner

Serenade, Op.3

Bizet

Symphony in C

The Parish Church
of All Saints
Bark Hart Road
Orpington BR6 0QD

Conductor: Emily Singh
Leader: Sarah Douch

Tickets: £10 (children £5) at the door
or telephone 020 8851 4502

www.orpingtonsymphonyorchestra.co.uk

Registered Charity no. 1063477

The 5 Bells Celebrates the Platinum Jubilee

THURSDAY 2ND JUNE

**ACTUAL CORONATION DAY
ON 2ND JUNE 1953**

12 – 2.30 LIGHT LUNCHEON

**SCOTTISH SMOKED SALMON
ON TOAST**

**OPEN CORONATION CHICKEN
BAGUETTE
SERVED WITH A FRESH SALAD
GARNISH**

**(CELEBRATING THE INDIAN CONNECTION AND
THIS DISH WAS MADE FOR THE OCCASION)**

**RHUBARB CRUMBLE WITH DEVON
CUSTARD
(RHUBARB WAS WIDELY GROWN IN GARDENS
AT THIS TIME – JUST AFTER WWII)**

2 COURSE £15.3 COURSE £18

**8 – 10.30 – STRIKE UP THE
BAND**

**OUR FAVORITE JAZZ BAND 'JUST
FRIENDS' WILL ENTERTAIN US
THROUGHOUT THE EVENING**

**THE RESTAURANT WILL BE OPEN SO
PLEASE BOOK YOUR TABLE, WHETHER
EATING OR JUST LISTENING**

11.00 CLOSE

FRIDAY 3RD JUNE

**GETTING OVER THE
EXCITEMENT OF THE
CORONATION**

**12 – 2.30 LUNCH FROM
THE MENU**

**HAIR OF THE DOG
(CORGI OF COURSE)**

**3.30 – 5.00 GOOD OLD FASHIONED
AFTERNOON TEA WITH A BOTTOMLESS
TEA/COFFEE POT**

£18 PER PERSON

**OR, GO FOR THE ABOVE WITH
'BUBBLES'
BOTTLE OF PROSECCO BETWEEN 2**

£26 PER PERSON

**THE RESTAURANT WILL BE OPEN
AS USUAL FROM 6 – 8.30**

SATURDAY 4TH JUNE

**12 – 2.30 LUNCH FROM
THE MENU**

6.30 COCKTAILS - £7.50

**OUR EVENING MEAL WILL BE
A TYPICAL 'BRITISH' THEMED
ONE : 6 – 8.30**

Starter:

Broccoli & Stilton Soup (Vg)
Traditional Prawn Cocktail

Mains:

Fish & Chips
Steak & Kidney Pudding
Toad in the Hole
Ham, Egg & Chips
Beetroot & Squash Wellington (V)

Desserts:

Fruit trifle
Apple Crumble with Devon Custard
Trio of Ice Cream

ONLY £23 PER PERSON

SUNDAY 5TH JUNE

**12 – 4 SUNDAY LUNCH
4 – 6 STREET PARTY**

**TABLES WILL BE LAID OUT IN OUR CAR
PARK IN FRONT OF THE PUB – FREE**

**THE FIVE BELLS
CHELSEFIELD VILLAGE**

**HER ROYAL HIGHNESS
QUEEN ELIZABETH II
PLATINUM JUBILEE
CELEBRATIONS**

**2ND JUNE 1953
2ND – 5TH JUNE 2022**

**Our wonderful Queen is the first British
monarch to reign for a continuous
70 years**

Elizabeth II first came to the throne after
the death of her beloved father
Her accession to the throne was on
6th February 1952 with the actual
Coronation being held on
2nd June 1953

This is an opportunity for us all to thank her
for the service she has given and to
celebrate a wonderful achievement.

As we all know her road to this date has
been rocky in parts and with the loss of her
much loved Phillip she has soldiered on
and can still smile
Long Live the Queen



**THE FIVE BELLS
CHURCH ROAD
CHELSEFIELD VILLAGE
ORPINGTON
KENT BR6 7RE**

**TEL: 01689 821044
WEBSITE ADDRESS:**

Thefivebells-chelsfieldvillage.co.uk
Facebook: The Five Bells Public House
& Restaurant, Chelsfield Village

Fathers Day at The Five Bells



Sunday 19 June 2022 MENU for The Restaurant @ The Five Bells

We have two sittings: Book your table between 12 – 1.30 to vacate by 3.15 or book your table between 3.30 – 4.30

Starters:

Traditional Prawn Cocktail served with brown bread
Broccoli & Stilton Soup (Vg, GF) served with a roll
Halloumi Sticks served with a sweet chilli dip

Main Courses:

Traditional roast dinner with all the trimmings with your choice between:
Beef, Lamb, Turkey or a vegan Nut roast (Vg)

Vegan vegetable tart with new potatoes & seasonal vegetables (Vg)

Steak & Kidney Pudding with mashed potatoes & garden peas

Fish & Chips with garden or mushy peas

Pan fried Sea Bass with sauté potatoes & green beans served with a white wine & prawn sauce

Desserts:

Chocolate Brownie Sundae
Apple Strudel with custard
Cheeseboard (3 cheese selection) £3 supplement

**2 course - £21 : 3 course - £25 : Children's 2 course - £10 : 3 course £13
Children under 10 years of age menu available - £7**

£10 deposit required at the time of booking

Platinum Jubilee at The BoPeep

PLATINUM
JUBILEE
At



T
H
E

B
O

P
E
E
P

Thursday 2nd
To
Saturday 4th June 2022



SOUP OF THE DAY with crusty bread

DEEP FRIED WHITEBAIT with tartare sauce

STILTON & WALNUT STUFFED MUSHROOM £6.95

MELTED BRIE glazed with cranberry

ASPARAGUS with melted Butter £6.95

WARM SMOKED Mackerel with horseradish



BEER BATTERED FISH & CHIPS

VEGETARIAN TART with salad & new potatoes £12.95

STEAK & ALE SUET PUDDING with seasonal vegetables & new potatoes
£14.95

BANGERS & MASH IN A GIANT YORKSHIRE PUDDING with onion gravy

COLD POACHED SALMON with chive potato salad & watercress £15.95

HAND CARVED HAM, DOUBLE EGG & CHIPS £10.95



APPLE & CINNAMON CRUMBLE
FRUIT & SHERRY TRIFLE
SPOTTED DICK
STRAWBERRIES & CREAM

ALL DESSERTS £6.25



St Martin's Toddler Group

Summer 2022



Dear Parents, Grandparents and Carers,

Here are our dates for the Spring term. We meet in The Brass Crosby Room at St Martin's Church, Chelsfield on Tuesdays during school term time, 10.30am – 12noon, £2 per child/baby which includes refreshments and craft resources.

We look forward to seeing you,

Toddler Volunteers:

Jenny, Peter, Mary, Val, Anne and Ally.

7th, 14th, 21st, 28th June

July and August - Summer Holidays so no Toddler Group

Contact Details:

Toddler Group Leader – Jenny Wood

Email: stmartinstoddlers@gmail.com

Church website: www.stmartinchelsfield.org.uk

Gin Week at the BoPeep



**GIN WEEK at
THE BO PEEP**

Saturday 11th-Saturday 18th June 2022

T
H
E

B
O
P
E
E
P



GORDONS
BOMBAY SAPPHIRE
HENDRICKS
TANQUERAY



OR WHY NOT TRY SOMETHING DIFFERENT

CITRUS
STRAWBERRY & CREAM
JASMINE & ROSE
GINGER & RHUBARB
MIXED BERRY
GRAPEFRUIT
BLOOD ORANGE



All Served with FEVER TREE TONICS & a selection of garnishes
Lemon, Lime, Orange, Strawberry, Apple,
Mint, Rosemary, Cucumber, Lavender,



The Benefice of
Chelsfield with Green Street Green
and Pratts Bottom



St Martin's Chelsfield & Well Hill

Calendar of Services – June 2022

Please be aware that in the current situation this schedule is subject to change, potentially at short notice. Please watch the church website for updates (see link at bottom of page).

St Martin's

Wed 1 June 9.30am Holy Communion – BCP



Sat 4 June 2.00pm Jubilee Tree Blessing & 'Bring Your Own' Picnic
Sun 5 June 10.00am Pentecost Communion
Pentecost Sunday 6.30pm Evensong – BCP

Wed 8 June 9.30am Holy Communion – BCP

Sun 12 June 10.00am Family Worship with baptism
Trinity Sunday 6.30pm Sung Eucharist - BCP

Wed 15 June 9.30am Holy Communion – BCP

Sun 19 June 10.00am Family Communion
1st after Trinity 6.30pm Evensong - BCP

Wed 22 June 9.30am Holy Communion – BCP

Sun 26 June 10.00am Family Worship with baptisms
2nd after Trinity 6.30pm Evensong – BCP

Wed 29 June 9.30am Holy Communion – BCP

Well Hill

Sun 12 June 10.00am Morning Prayer

Sun 26 June 10.00am Holy Communion

www.stmartinchelsfield.org.uk

As at 28 May 2022



WHAT'S ON at The Chelsfield

Weekly Pub Quiz

starts every Thursday
from 7.30pm
(£2 entry, rolling Jackpot)

Saturday Brunch

Our Brunch starts 10am
every Saturday, served
until 1pm

Platinum Jubilee Quiz

Challenge your
knowledge on the
monarch's life and reign.
Thursday 2nd June
from 7pm.
(£3 entry, rolling Jackpot
and Bottle of Sparkling,
winner takes it all)

Live Music Platinum Jubilee

The ever-entertaining
Legendary Sticklebacks
to celebrate Platinum
Jubilee weekend
performing
on Friday 3rd June
from 9pm.
Free entry.

Live Music

**The Kristian Baker
Band** performing on
Saturday 18th June from
9 pm. **Free entry.**

Sunday Roast

Served from 12noon all
day, Beef, Lamb shank,
Pork belly, plant-based
Wellington



A Farewell Message

We would like to thank
all our customers and
friends for their support
over the years. It has
been almost 17 years
since we took over the
running of The Five
Bells and in all that time
your friendship has
prevailed.

It is with both sadness
and excitement we say
goodbye, as we go on to
the next stage of our

lives, but we don't
believe it will be the last
time we will see you all
again.

Once more thank you so
much for your kindness
and concern during our
tenure here and looking
back we've had loads of
fun too.

Keep well everyone

Kay & Ade Stone



Open Garden on 12th June



We are delighted to invite you to this years open garden on 12th June at 12, the Meadows, Chelsfield, Orpington, Kent, BR6 6HS.

Opening is from 11am 'til 5pm and entrance is £5 for adults and children free. All proceeds go to the ngs excellent charities (see ngs.org) except that proceeds from refreshments all go to St. Christopher's Hospice.

There is hopefully interest

for all ages. Children's area with 14' giraffe, Sumatran Tigers etc. and sign " children only. No adults allowed access unless accompanied by a responsible child ". Easy wheelchair access to most of the garden. Home made cakes, tea coffee etc. and lots of home grown plants at very reasonable prices. Plenty of seating. Giant bamboos, two ponds (one Koi), 34 Acers, greenhouse and lots more. Well behaved dogs

very welcome. Parking

fairly easy but, if you have mobility difficulties, please stop outside our house and we'll do our utmost to find suitable space (we have lovely neighbours).

We really hope to see you (and your family, friends, neighbours and all).

If you need further info. please call Jean and Roger on 01689853210.

Thank You.

Local History Group - Escape

Pam Preedy presented a well illustrated talk on Bromley's role in supporting the Belgian refugees of WWI with many contemporary newspaper pictures.

On the 28th June, 1914, the shot that killed

Archduke Franz Joseph of Austria and his wife Sophie, echoed around the world from Sarajevo but went unreported in the Bromley & District Times which, as a local paper wrote about affairs of local interest and this event was too far away to

be worthy of comment. Germany apparently feared an attack from France or Russia. They planned to invade neutral Belgium to the east and then swing round to attack France to the south-west. Britain leapt to defend their little ally.

The British Expeditionary Force were outnumbered by the Germans 3 to 1. They were forced to withdraw. Both sides dug themselves into trenches leading to the war of attrition.

Angry that the Belgians had slowed their progress, the Germans took revenge on the native population. As the Germans marched into Belgium, the people began to move out of their homes to escape the wrath of the soldiers.

From August, 1914, the refugees and wounded Belgian soldiers began arriving in England. They needed help; money, shelter and nourishment.

By the middle of September, there was a steady flow of Belgian refugees reaching Bromley. They continued to arrive in Folkestone and in other ports.

It was not just the refugees arriving in England, but also wounded Belgian soldiers. They needed help: Bromley was one of many places in England that welcomed them. In November 1914, it was

estimated that there were about 300 refugees in Bromley with a similar number across Beckenham by April, 1915. Homes were either offered, or 'taken' for them. Large homes were preferred to keep families and communities together. Mr & Mrs White offered their house, The Gorse for the refugees. It had been empty for six years. 25 people aged from 12 months to 83 years were housed there in November 1914.

Articles in the Chislehurst and Sidcup District Times comment on the comfort of the house and gifts of food, coal, and clothing, and money donations.

People were generous in their offers to lend and equip homes for the refugees

There was so much that the refugees needed; churches made their contribution e.g. the collection from St Joseph's Church, Plaistow Lane of £17 2s 4d went to the Belgian War Relief Fund.

Concerts were also held to raise money for the funds.

The Council was able to be generous and agreed that any houses taken over rent-free for the refugees would be free 'from all rates and taxes.'

Trades people offered help: the Hovis Bread Flour Co., Ltd sent enough flour 'to supply bread for the family of 29 refugees for one month,' and 'a Beckenham baker had kindly arranged to make and deliver it free of charge.'

In December, 1914 it was announced that the children of Holmcroft School were devoting all spare time since the term began in September, to making articles of clothing for Belgian refugee children. The children from Keston School had written a kind letter and sent presents to the Belgian children in Hayes House and had received a letter, in French, back from them thanking them for the gifts; "Nous apprécions vivement votre cadeau."

Father Dams, a Belgian priest who worked among the refugees in Beckenham had brought a school for Belgian children into being. He

realised the necessity when these children went back to their own country of speaking their own language.

And then it was time for them to leave, to be repatriated to their own country. The King of the Belgians needed them to return to rebuild their country and the British Government wanted them gone to be replaced by the repatriated soldiers. The aim was to get them to leave the country as quickly as possible.

The few that did stay integrated into British life - many married Britons they had met while in the country.

The refugees were initially greeted with open arms. There was a jubilant feeling of going to get 'the Bosche' and the 'plucky little Belgians' fitted into that narrative. It was often the case that if

you didn't have a refugee staying with you, you knew someone who did. They were treated rather like pets.

Official records from the time estimate 250,000 Belgians refugees came to Britain during WW1. In some purpose-built villages they had their own schools, newspapers, shops, hospitals, churches, prisons and police. These areas were considered Belgian territory and run by the Belgian government. They even used the Belgian currency.

One such village was Elisabethville after the Queen of Belgium. It was established close to an armaments factory in 1916 in County Durham to house the workers. Elisabethville was very much a separate entity, fenced off from nearby Birtley village. There was very little mixing between

the Belgians and local inhabitants of Birtley and a certain amount of jealousy from the local population in Birtley who saw the Belgians enjoying a better lifestyle than them.

After the Armistice in November 1918, the Belgian workforce began returning home, although some did remain and settle in the North East. Elisabethville was then used to house the growing population of Birtley who were surprised at the luxurious accommodation which included electricity. Belgian street names were replaced by English ones and the name Elisabethville fell into disuse. Today only a few signs of the original village remain, these being a shop, the hospital, part of a factory and the cemetery that contains a number of Belgian headstones.

School Facilities to Hire

Are you in need of classrooms, hall, playground or kitchen facilities to hire? Then Chelsfield Primary School may be able to help. Contact Stephanie at: stephanie.lavelle@solamat.co.uk to discuss your needs.



View From The Rectory

Do you worry care about environmental issues and wonder what you can do about it practically? That was a question I posed to myself last month when I was leading a study group at church about creation and our responsibility to care for it. My response has been to follow up a venture I first became aware of a couple of years ago when I lived in Tunbridge Wells. That venture is a Repair Café. You may have heard of them and seen the Repair shop tv programme which is based on a similar idea but on a more complicated scale. Repair Cafes have been set up in many locations across the world with a mission to reduce the amount of

our resources that we throw away into landfill by repairing items that are uneconomical to repair if they were repaired commercially. An example would be a kettle. If the on off switch broke, then most of us would simply throw it away and buy a new one but if we could get a simple repair done, we may well be able to extend its life by many years.

There are repair cafes locally and one has just opened in Sevenoaks. I am keen to get one up and running in Orpington and now I am searching for a few people to help me get it started. If you are passionate about environmental issues and

want to reduce our waste, then you may be the person I am looking for. If you have skills in Finance, Law, managing volunteers or human resources then that would be an added bonus. Also, if you can think of someone you know who fits the bill then please mention it to them. Please do get in touch with me if you are interested in helping or would like to know more. There is an international affiliation of repair cafes and their website is <https://www.repaircafe.org/en/>

My email address is revmichael@smasch.org

Rev Michael

ULEZ

Today, we launched a [consultation](#) to seek your views on expanding the Ultra Low Emission Zone (ULEZ) London-wide. The Mayor has asked TfL to consult on these proposals and to begin to develop a longer-term smart road user

charging system to address the triple challenges facing London of toxic air pollution, the climate emergency and traffic congestion.

The consultation will run for 10 weeks until 29 July and asks a number of

questions on the proposals for the London-wide ULEZ. If a larger zone was introduced, it would have a transformative effect by the end of 2023. It is estimated that the number of cars not meeting the tough ULEZ emission

standards each day would fall from 160,000 to 46,000 and number of vans from 42,000 to 26,000.

We are also proposing to make it easier for people with non-compliant vehicles to pay the charge and not get caught out by removing the annual £10 per vehicle Auto Pay registration fee, while ensuring fines for non-payment remain an effective deterrent by increasing the penalty by £20, or £10 if paid within 14 days. Additionally, we want to hear your views on how we shape the future of road user charging in the capital.

There are a number of documents to help you and your constituents to

respond to the consultation. For an overview of the proposals there is a short video and a short consultation brochure.

More detailed information is also available including an Integrated Impact Assessment report which has been prepared to identify the likely significant impacts of the consultation proposals and identify possible mitigating measures where appropriate.

We want to encourage you to have your say through the consultation questionnaire about the way forward to achieving a clean, green and healthy future London. Please also contact us should you want more

information. We are also creating a toolkit for you to easily share information with any of your stakeholders which we will be sharing this with you next week.

We hope that you will give your views via the Have Your Say website. You can also call us on 0343 222 1155 or email us at cleanairyourview@tfl.gov.uk with your response.

We will also be in touch soon to offer briefings on this consultation. Please do let us know whether you would be interested in attending a briefing session and don't hesitate to get in touch should you have any questions.

Emily

Transport for London

June Events at Bore Place

Bore Place is an environmental NGO based in Chiddingstone, Kent. Visitors can park on-site and explore the stunning 500-acre organic farm with several walking routes to choose from. Here is a rundown of our June events, which can be booked online at www.boreplace.org/whatson

Wildlife Gardening Club: Wildflowers for Pollinators Friday 10th June (10am-1.00pm) Price: Adult FREE

Introduction to Beekeeping Sunday 12th June (10am-4pm) Price: Adult £59.00



**TO DONATE TO
US ONLINE SCAN
THE QR CODE**



WANTED

OUR MOST NEEDED ITEMS ARE:

- Tinned tomatoes
- Tinned potatoes
- Cooking sauces
- Cold meat
- Squash
- Toothpaste (regular size please)
- Washing up liquid
- Toilet Rolls
- Nappies size 6 & 6+

26.05.22

PLEASE DON'T GIVE US FROZEN OR CHILLED ITEMS AS WE DON'T HAVE
THE CORRECT STORAGE FOR IT AND IT SPOILS BEFORE WE CAN
DISTRIBUTE IT.

WE'VE GOT PLENTY OF: PASTA, CEREAL, TEA & BISCUITS

**TAKE A PHOTO OF THIS LIST
WITH YOUR PHONE TO
REFER TO WHILE YOU SHOP!**

**IF YOU ARE IN NEED OF FOOD SUPPORT
PLEASE CONTACT US ON 0800 9 20 23 24**



St Martin's Platinum Jubilee Tree Blessing & Picnic

Saturday 4th June at 2.00pm



We're blessing an oak tree
planted at St Martin's for

THE QUEEN'S PLATINUM JUBILEE

and then having a
'bring your own'
Jubilee picnic



Please come and join us, all welcome



Tea and coffee will be served



Chairs & tables provided for those that need them

Kent Heights Flower Club

KENT HEIGHTS FLOWER CLUB

Thursday 7th July 2022

Summer Supper and Flower Demonstration

At Halstead Village Hall, Knockholt Road, TN14 7EX

**Everyone is very welcome to come along to our
July Summer Supper meeting.**

**We will be offering a 2 course meal with wine, followed by a
flower demonstration with Chelsea gold medallist Myra Lester**

7.00pm for 7.30pm

Members £16 Guests £19

**Come and join us, enter the raffle and you will have a chance at
winning one of Myra's stunning arrangements**

For Supper tickets and further information contact

Sally Kemsley on 01959 534406

The Bromley Buzz Podcast

'The weekly Bromley Buzz podcast previously featured in Chelsfield Village Voice continues to broadcast regularly on the internet, talking about all things Bromley. Checkout

www.bromleybuzz.co.uk

for details of shows and where to listen - platforms include Spotify, Apple, Audible, Podbean, Alexa, Amazon and more.'



Bromley Arts Festival

This July... you're invited.
www.bromleyartsfestival.com

The logo for Bromley Arts Festival is a white circle containing the text 'bromley arts festival.' in a lowercase, sans-serif font. 'bromley' is in black, 'arts' is in teal, and 'festival.' is in black.

Bromley Arts Festival: A fresh new Festival to showcase the Arts scene throughout July

Even as the Queen's Platinum Jubilee celebrations reach their high point, waiting in the wings to make summer even better is the Bromley Arts Festival, which aims to celebrate every arts event in the London borough throughout July.

To date, over 80 dates have been registered, including theatre, dance, comedy, music, art, and poetry.

Already a culturally abundant borough, Bromley has its own amphitheatre, several theatres, a strong musical heritage crowned by its association with David Bowie, numerous art societies and creatives, poets, dance groups and more. A large, diverse, and green borough, *all* of the borough is being brought together in this festival, from the town centre with its Churchill Theatre, often used to launch national touring shows, to Biggin Hill, the famous wartime air base and home to arts events at its Memorial Museum, to Beckenham, home of the Bethlem Art Gallery, and to Penge, a noted destination with eye-catching street art in the form of marvellous murals. From the 1st of July and *Breaking The Code* debuting at Bromley's Little Theatre, to the 31st and *Magpie Dances* presenting *Global Moves and Grooves - A Festival of Dance and Culture*, there is something for everyone in Bromley this July.

Festival information is being shared through our new website, social media, posters, leaflets and by our taking the festival to the media. The ambition? To bring people locally and from far and wide to love the diverse, busy, and exciting arts offer that Bromley has all year round, but, specially, this time, in one glorious, summer month.

Contact: Darren Weale, telephone 07708 712011; email darren@intunepr.co.uk

Links and hashtags

Website: www.bromleyartsfestival.com

Hashtags: #bromleyartsfestival #prideinbromley #bromleybuzz

Dates For Your Diary

WEEKLY EVENTS

Every Tuesday
Brass Crosby Room
St Martin's Toddler Group
10.30am-12.00noon

Every Tuesday
Five Bells
CHARITY QUIZ NIGHT
8.30pm

Every Thursday
The Chelsfield Pub
QUIZ NIGHT
from 7.30pm
Wednesday 1st June

INDIVIDUAL EVENTS

Chelsfield Village Hall
Chelsfield Volunteers
AFTERNOON TEA
2.30pm-4.40pm

Thursday 2nd June
The Chelsfield Pub
Platinum Jubilee Quiz Night
from 7.00pm

Thursday 2nd June
Five Bells
Live Jazz with Just Friends
from 8.00pm

Friday 3rd June
The Chelsfield Pub
Platinum Jubilee Live Music
Legendary Sticklebacks
from 9.00pm Free Entry

Saturday 4th June
St Martin's Church
JUBILEE TREE BLESSING
2.00pm

Monday 6th June
Five Bells
KNIT & NATTER NIGHT
from 8pm

Tuesday 7th June
Five Bells
Quiz Night for Fair Air Show
from 8pm

Wednesday 8th June
Five Bells
Open Mic Night
From 8.00pm

Saturday 11th June
The Rectory Garden
ST MARTIN'S FETE
from 12 noon to 4.30pm

Sunday 12th June
12 The Meadows
OPEN GARDEN
See page 19 for details

Wednesday 15th June
Chelsfield Village Hall
Chelsfield Volunteers
AFTERNOON TEA
2.30pm-4.40pm

Saturday 18th June
St Mary's Church Hall,
Green Street Green
iCare QUIZ NIGHT
See page 9 for details

Saturday 18th June
All Saint's Church
Bark Hart Road
Orpington Symphony
Orchestra
See page 11 for details

Saturday 18th June
The Chelsfield Pub
Live Music - The Kristian
Baker Band
from 9.00pm Free Entry

Wednesday 22nd June
Five Bells
Open Mic Night
From 8.00pm

Tuesday 21st June
Chelsfield Village Hall
Evening WI
7.30pm-9.30pm

Fri - Sun 17th-19th June
Coolings Garden Centre
CRAFT SHOW
10.00am to 4.00pm

Saturday 25th June
Coolings Garden Centre
FARMERS MARKET
10.00am to 4.00pm

Thurs 30th June
Chelsfield Village Hall
Local History Group
10.30am-12.00 noon

Thursday 7th July
Halstead Village Hall
Kent Heights Flower Club
7.30pm for 8.00pm start

Saturday 9th July
Chelsfield Cricket Ground
CHELSEFIELD VILLAGE FAIR
12 noon - 6.30pm

Recycling Bin Collection June 2022

Monday 6th June
Monday 13th June
Monday 20th June
Monday 27th June
Monday 4th July

Plastic, Glass and Tins, Food Waste.
Non-recyclable refuse, Paper & Cardboard, Food Waste
Plastic, Glass and Tins, Food Waste.
Non-recyclable refuse, Paper & Cardboard, Food Waste
Plastic, Glass and Tins, Food Waste.

Every week

Batteries, Small Electrical Items, Textiles (please only present one small transparent bag each week, and re-present the following week if it is not collected)

Every 2 weeks (Mar-Nov)
every Month (Dec-Feb)

Green Garden Waste is collected fortnightly or monthly only from households that subscribe (£60 per annum) to the Bromley scheme (Telephone: 0300 303 8658 for advice)