



The Newsletter and
"What's On" Guide for
Residents & Friends
of Chelsfield Village

May 2010

The Chelsfield Players present

A Wedding Story

by Bryony Lavery

Evelyn and Peter have a wonderful marriage. A test of their unwavering love comes in the form of an illness, robbing Evelyn of her identity.

Meanwhile, a chance encounter finds their daughter Sally in a bathroom cubicle with Grace. The heartbreaking yet sometimes humorous journey through Evelyn's decline forces Sally to re-evaluate her views on love, marriage and the traditional love story.

A funny, sad, deeply felt play about love, commitment, families and old age written with a light, wry touch that is also capable of great emotional truth. - Daily Telegraph

'Funny, frank and churning by turns, this struck me as a lyrical play about the unlyrical business of coping when real life knocks on the door' - Daily Express

'A play that soars wonderful' - Guardian

Contains strong language

Performances on

**Thurs 27th, Fri 28th, Sat 29th May 2010 at
8.00pm**

and Sun 30th May at 3.00 pm
in the Chelsfield Village Hall

Doors open a half hour before the performance starts

Tickets **£6.50** each (including refreshments)
(please make cheques payable to
The Chelsfield Players)

**For booking please contact: Brenda Payne
01689 831187**

In This Issue:

Local Businesses	2
Chelsfield Village Fair	3
Bromley Diversity Plan	5
African Visitors	5
Local History Group	6
Chelsfield Invasion Map	7
Court Road Accidents	8
Chelsfield Evening WI	9
Village Hall News	9
Rural Internet	10
Stolen Wheelie Bin	10
Eating Out	11
Useful Contacts	11
Dates For Your Diary	12

SATURDAY 8th MAY
65th Anniversary of
VE Day

Join us at the
FIVE BELLS
to celebrate

Themed Activities
from Midday

CONTRIBUTIONS **PLEASE !**

Contributions for our June
issue should be emailed to:

villagevoice@chelsfield.org

or posted to:

Chelsfield Village Voice
2 Bucks Cross Cottages
Chelsfield Village BR67RN

Visit

www.chelsfieldevents.co.uk

Get To Know Your Local Businesses

I made the decision to start my own business last year, firstly because I wanted a challenge and to spend every day doing something I enjoyed and believed in. Secondly, being your own boss has endless paths and opportunities. My business is called 'Make My Day', this constitutes many different meanings, ranging from Sports Massage to Wedding/Event Planning, Professional Make-Up to Baby and Infant Massage Parent Instructing, most of my work is mobile which allows my clients to have a stress free treatment or booking which allows them to feel relaxed in their own environment, so when travelling or child care maybe difficult, I can help.

I cater for all different needs and my services are 100% dedicated to each individual, which includes back analysis, full consulta-

tion, nutrition advice, stretching sheets and much more depend on specification. For more information on 'Make My Day', please contact me on:

hayleymakemyday@aol.co.uk



Phone: 07908 417581
or please visit:
www.makemydaybyhayleybrooks.com

I am running a monthly competition with 'Chelsfield Village Voice' and offering a FREE treatment to the lucky winner; all you have to do is email me your Name, Age and Contact Number to:

hayleymakemyday@aol.co.uk

'Make my Day' is growing!! 'Make My Business' is dedicated to all Local services, Local Businesses and networking in and around our area. Recent studies have found that people tend to look further afield for services, when they could be next door. I am a great believer in local resourcing, using local amenities and keeping the community self-sustainable, this is why 'Make My Business' can help generate the right custom for your business or services. If you have your own business and wish to have further information on this please contact me on:
makemybusiness@aol.co.uk

Thank you and I look forward to hearing from you.

Hayley Brooks

Chelsfield Village Fair 10th July 2010

The 2009 Chelsfield Village Fair raised in the region of £6,000 for charities and local good causes, despite the slightly miserable weather, and planning for the 2010 Fair is well underway. We have a small committee who begin meeting around November of the previous year and as we approach the day itself, the team of volunteers expands enormously. 10th July, the date for this year's fair was decided way back in August last year and in choosing dates we endeavour to avoid clashing with any other local fairs and major events.

The 2009 Fair saw a record attendance with over 4,000 people visiting Chelsfield during the afternoon and while this was wonderful for the charities, the traffic snarl-up was legendary. One of the first things we have tackled this year is improved traffic flow. We have a reasonable amount of parking within

a reasonable distance of the Fair thanks to generosity of the Church, London Borough of Bromley and Doug Parkes but the main snag last year was clogged roads. The police have been very helpful this year and we have decided that in order to keep the village moving we will make the stretch of Bucks Cross Road between Skibbs Lane and Maypole Road one way, and we will, if possible, make Skibbs Lane one way so that we do not have traffic getting stuck at the entrance to the car parks. This will only be for the afternoon and it should make everyone's lives easier. We will be sending out a traffic plan to all residents in the weeks before the Fair and we are happy to discuss any concerns you may have.

Booking entertainment is one of the nice jobs and this year we have the return of the Croydon Steel Orchestra who will be opposite the beer tent providing summery

sounds throughout the afternoon. The ever popular Mike Delaney, football wizard will be returning to amaze young and old with his amazing ball skill and we also welcome the return of the Hillsiders Line Dancing team from Hillside School. Making their first appearance this year will be Eagle Heights who will be bringing along a number of birds of prey for the afternoon and there will be a 45 minute birds of prey demonstration which is not to be missed. And what would Chelsfield Fair be without our flying displays?

We are very lucky in that we have a great deal of open countryside around the Cricket Green which means that we can put on safe and exciting flying displays. We have booked the Spirit of Kent Spitfire for the third year running and we make no apology for that. It is wonderful that Biggin Hill has a resident Spitfire and we are thrilled that we can so our bit to

make sure that it remains financially viable for the owners to keep it there. Last year, we were disappointed that the weather prevented the DeHavilland Vampire making it to the leaden skies over the Fair (he made it to Well Hill but no further!), but we're going to try again. Matt Hampton's North Weald-based Vampire is booked and we are keeping our fingers-crossed for kinder weather.

- The cost of these flying displays is not insignificant – somewhere in the region of £2,000 for both and in order to fund these without eating into the substantial charitable funds we raise, we have set up the Chelsfield Flying Club. This is open to anyone who would like to make a donation toward the cost of the aircraft and in return they get a mention on our website and in the programme and will have the satisfaction of knowing that they helped it happen (hats and T-Shirts have been known to be given as a thank you to members in the past!). If you

would like to donate, and we would ask for a minimum donation of £20, you can write a cheque made payable to 'Chelsfield Village Fair' (please make sure you write *Chelsfield Flying Club* on the back of your cheque). You can send your cheque to **June Cottage, Church Road, Chelsfield Village, Kent, BR6 7RE**, or pop it into one of the special envelopes behind the bar at the Five Bells. Alternatively pay on-line by going to:

flying.chelsfieldfair.com

and using our secure PayPal payment system. The more we raise, the more the charities benefit from the day. We'd like to thank Adrian and Kay at the Five Bells who have already made a substantial donation to the fund.

On the subject of charities, last year our headline charities were the Royal National Lifeboat Institution and Harris Hospiscare. This year our headline charity is Help for Heroes, the charity who help servicemen and women who

have fallen on to less fortunate times, often through combat injury. There are a number of young people in the Village who have served, or are serving in Afghanistan and Iraq and we are delighted to be supporting this charity in 2010.

We are always looking for volunteers and the co-ordinator for that is Sharon Wright:

Sharon@chelsfieldfair.com

any help you could give on the day would be gratefully accepted. If you can do half an hour on the gate or sell some raffle tickets, it all helps.

So that's all for now. We're looking forward to another bumper turn-out in July and we would encourage you to visit our website:

www.chelsfieldfair.com

regularly and maybe become a fan on Facebook (there's a link on the website). We will be giving you further updates via the excellent Village Voice in the next couple of months —

so see you then!

Dave Griffiths – Chair-
man; Chelsfield Village
Fair – 07796 696065
admin@chelsfieldfair.com

Bromley Biodiversity Action Plan



With this copy of the Village Voice, you may have a copy of the Bromley Biodiversity leaflet (we were not given enough to go into every copy). This gives information on the Bromley Biodiversity action plan and lists local events supporting the international year of Biodiversity.

Bromley is also organising the recording of the variety and whereabouts of bird and tree species in the Bromley Borough '2010

Twig and Tweet Challenge'. The aim is to spend an hour or two in your neighbourhood, sometime between now and August. If any residents are interested in taking part, please contact the Village Voice for a survey form, or record online using the website below. We could take part in this as a group or as individuals.

More information is available from:

www.bromleybiodiversity.co.uk

African Visitors Return to Chelsfield

Friday 23rd April saw the return of the first wave of House Martins to this area. A few dozen birds spent some time flying around some old nests in the village before flying on. This happens at about this time each year, with the second wave coming in another week or two, with a larger number of birds coming and staying in the village. Have others seen these yet?



Report form The Local History Group

Paul Rason pointed out that the group has now been running for 2 years and although he has plenty of material for the foreseeable future with the occasional guest speaker, he invited others to give talks or make suggestions.

This week's talk was introduced by a recording of the song "Mr Cuckoo" by Edmundo Ross made in the 1950s. Paul told us that the female backing singers were the "Country Maids" who were from Orpington. The group was part of Orpington Junior Singers, the subject of the talk this week.

The Singers were founded in 1949 and practised in the youth club at the bottom of Knoll Rise. It included children aged 8-19 and later up to 24 for competitions. The inspiration for the group was Sheila Mossman, an accomplished concert pianist who lived in St Mary Cray. When the "Mr Cuckoo" recording was made the girls made their recording separately from the orchestra. Paul handed round the original sheet music which was used for the recording. It

was marked up with instructions in pencil.

The OJS performed at fetes and festivals, providing a good draw for the public as they were national celebrities, having an anthem written for them by Sir Arthur Bliss. They were very successful at competitions and appeared on television several times. Sheila was supported by her husband John Brown who took care of the management side. They performed in Europe, even learning a song in Norwegian for a performance in Norway, which was very well received. The problems of travelling abroad in the 1950s with a group of 50 girls must have been far harder than today. Paul played us a recording of the girls singing Mahler's 8th Symphony conducted by Leonard Bernstein at The Royal Albert Hall. Bernstein was impressed that the girls had learnt their scores by heart, needing no music for the performance. The girls sang by invitation at 10 Downing Street to Sir Winston and Lady Churchill when he was prime minister.

Paul played a recording of Sheila playing the scherzo from Henry Litoff's 4th Piano Concerto. This performance was conducted by Vic Oliver, Churchill's son-in-law. Churchill is recorded as saying that Mussolini had the good sense to have his son-in-law shot! Obviously he did not think much of his daughter's choice of husband. Sheila Mossman was awarded the MBE in 1969 for her services to music and died in 1971 aged 49, but by then the heyday of the group was over.

Over 1000 singers have been members. There were 50th and 60th anniversary reunions with 20 or so ex members turning up in 2009.

After a break for refreshments Paul went on to tell us about the source of this information. In the course of giving a talk for U3A he came across a pile of scrapbooks which turned out to have come from John Browns family and had been rescued by an old OJS member who had been on the "Mr Cuckoo" recording and the Norwegian trip.

Amongst co-performers at OJS concerts was tenor Heddle Nash from Petts Wood. This area was a popular place for entertainers to live because of the good train service to London. Sheila Tracy (a jazz trombonist who used to present the BBC Big

Band on the radio) was an OJS member whilst studying in London.

Paul passed round the large collection of scrap books from the 50s and 60s which made fascinating reading. There were many newspaper cuttings,

concert programmes, tele-grammes, photographs (including photographs of television performances) and appreciative letters. This is a wonderful resource which will eventually be looked after by the local studies library

Invasion Map for Chelsfield

This is a copy of the never used Civil Defence *Invasion map for Chelsfield* sent to me by Vic Webster. It shows various anti Ger-

man systems of machine guns, explosives, Fumieres (flame throwing tanks of petroleum) etc to halt the enemy before they got

to the shops at Charterhouse Road which they would have undoubtedly pillaged.

Phil Lane

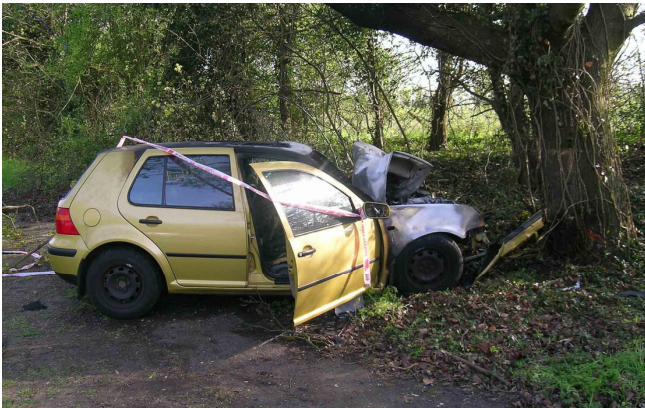


More Serious Accidents Along Court Road

There have been a number of serious accidents reported to the CVS during April.

On Easter Sunday 4th April ambulance and fire services were called to an accident adjacent to the Rugby Club in Court Road. On Tuesday afternoon 13th April emergency services were called to an accident at the Court Road/Warren Road junction and at around 21:00 on Thursday 22nd April emergency services were again called out to an accident involving a car losing control between Hewitts Farm and the Church Road junction, destroying a lamp post and colliding head on with an oak tree. All occupants suffered injuries but fortunately the driver managed to get the other two out as the car caught fire. Injuries included arm fractures, broken ribs, leg injuries and injuries caused by the seat belts. This could easily have been another fatal accident, thank goodness the occupants were wearing seatbelts.

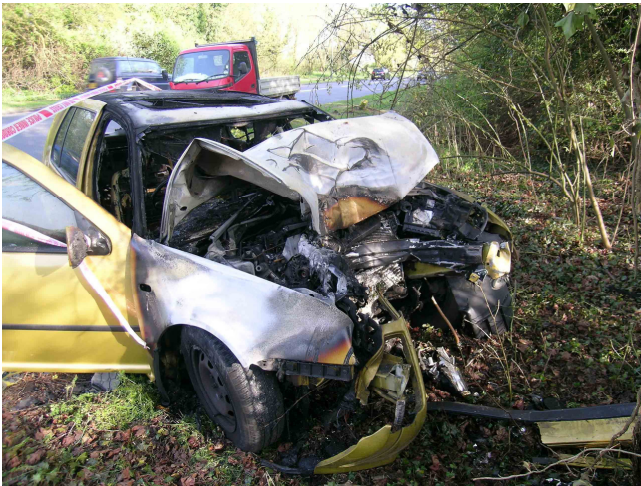
We only know about these as they were reported by residents, how many accidents are we missing?



Please report any you know of to the Village Society so that these can be logged.

On afternoon of Monday 26th and Tuesday 27th of April, police were seen operating a speed trap at the Warren Road/Court Road junction. CVS spoke

to them about the other dangerous stretches of road such as the Church Road junction. They said that the CVS could call on their use at any time and gave us contact details. They were aware of the recent spate of accidents!



Chelsfield Evening WI

At our meeting in March we were treated to a talk by Ann Thair, a blind lady, who was accompanied by her beautiful and very well behaved guide dog. Ann has had a guide dog for 50 years and her talk was very informative. She gave a real insight into the marvellous relationship a blind person has with their dog.

What I found particularly interesting was that whilst Ann's husband is also blind and also has a guide dog - the two dogs cannot be interchanged with their owners as the dogs have been trained to gauge the width of their owner. For example, should there be some sort of obstacle on the pavement the dog will guide its owner round it safely. If, for example, a larger person was walking with the same dog it could easily walk into the obsta-

cle because of the different sizes of the human beings. How clever is that?

Our meeting on 20 April (which was a change to the printed programme) was addressed by a member of the London Fire Brigade. Some of the facts and figures he gave us about domestic fires was quite surprising. The main culprits in the home are: cigarettes, electrical faults, candles, kitchen cooking pans and heaters. He also informed us that we should check our smoke detectors every week. Something I am sure very few of us do.

He also said that at his fire station 60 - 70% of the call outs are as a result of arson!

We rounded the evening off with birthday cake as

our WI celebrated its 49th birthday.

May's meeting will be held on the 18th and it is our AGM and resolutions meeting.

*Come and visit the WI
It's such tremendous fun
Activities galore for each
and everyone It's not just
'Jam and
Jerusalem'*

*So come along and see
We'll welcome you with
open arms
and a cup of Yorkshire tea!*

Chelsfield Evening WI meets at Chelsfield Village Hall on the third Tuesday of the month at 8.00 pm. We would be delighted to welcome visitors.

Any questions, please shout.

Angela

Village Hall News

The building is showing it's age. Wood and brick construction needs a lot of maintenance and we have recently had to fit new soffits and gutters. There is rot in the ends of some rafters though. The new windows have made a

difference and we have installed new double glazed crash doors. A wheel chair ramp for easy access will soon in place. The Jack Devine Bench has been replaced, at last, following the accident last September. It's absence

was noticed especially by walkers. We have at finally sorted out the clocks on the tower, along with the weather vane. So we may now check the time as well as see what way the wind blows!

Phil Lane

Villagers Set Up Rural Broadband Internet

Many Chelsfield Village residents complain about their broadband speed, (in the centre of the village we only get $\frac{1}{2}$ Mbits/sec). This is presumably due to the poor quality of the cabling into the village, distance from the sub station and lack of fibre in the locality. There is even a rumour from a BT engineer that much of the cabling around the village is Aluminum, a cheaper and poorer conductor. Well now there is a solution, although at a price!

A group of villagers in the small community of Lyddington in Rutland, have teamed up to fund a ground-breaking rural broadband service, because the big telecoms companies refused to supply the countryside.

It gives the 200 families in the small community access to the same kind of service as urban areas, such as streamed HD TV and other services like iPlayer.

After years of campaigning to get fibre-optic cable installed in the area, rather than accepting defeat, they setup their

own internet service provider (ISP), Rutland Telecom, funded by villagers, the total of £37,000 being raised by 11 local investors. This exploits present telecoms legislation to allow smaller companies to use stretches of BT copper wire network to supply ultra-fast broadband. The local investors will receive 10 per cent interest on their investment each year and the return of their capital after three years. Their money will allow the network to be established and the investment repaid from subscriptions paid over the three years by other users.

The village now has an up to 40 Mbits/sec broadband network piggybacked on BT's network. This service may signal the end of the 'digital divide' between cities and rural areas. Big companies do not find it cost effective to supply small and isolated communities, but if successful the Lyddington scheme is likely to be picked up across the country.

The Country, Land and Business Association (CLA) is urging small communities to follow the lead of Lyddington, and to help them has started a campaign, the Final Third First, explaining the benefits of broadband to communities, how partnerships can be formed and show ISPs there is a business case for providing these services. More details can be found at: www.finalthirdfirst.com

To our knowledge there is fibre optic cable through the village, but there has been little interest from the suppliers in using this to supply broadband to individual private houses. If anyone knows more about Broadband access in this area, please let either the VV or CVS know via the usual contact details

Wheelie Bin Stolen

A Wheelie Bin was stolen from Ivy Cottages over the Easter weekend. If anybody has seen it please contact the Village Voice to arrange the safe return!

Eating Out - Reku Zen – CVV Rating

In this new column our mystery diners will be eating, and reporting their experiences, at local restaurants within walking, bus, or cheap taxi distances from Chelsfield Village.

REKU ZEN (01689 826880)
www.rekuzen.co.uk

This fixed price Far Eastern Buffet Restaurant has been open for about a year. It is situated on the corner of the

High Street and Anyscombe Angle (the road leading to the Priory).

Reku Zen serve a large selection (over 50) of very good quality dishes, from freshly made sushi, teppanyaki grill bar (fresh food cooked while you wait), to meat, chicken, fish, shellfish and vegetable dishes.

The house wine is good and at £8.50 well priced.

Very Busy most nights, so worth booking.

Expect to pay about £6.99 lunch £12.99 week evenings £13.99 weekends excluding drinks.

Very highly recommended if you enjoy oriental style cuisine. Good for parties or large groups.

Because you help yourself it is suitable for all dietary requirements

USEFUL CONTACT NUMBERS

Bromley Council

Main switchboard:

020 8464 3333

E-mail:

csc@bromley.gov.uk

Opening hours Monday to Friday 8.30am to 5.30pm

Address: Civic Centre,
 Stockwell Close, Bromley, BR1 3UH

Reporting Problems to the Council

Can be reported via the CVS website, or if urgent by phone out of hours Emergency Duty Team 020 8464 4848.

Mobile Library

The mobile library stops outside Chelsfield Village

School on Tuesdays between 11:15 and 11:45.

Books can be reserved from here, or over the Internet via the Bromley library website for later picking up from the mobile library.

Councillors

Julian Grainger
 01689 889392

julian.grainger@bromley.gov.uk

Samaris Huntington-Thresher
 020 8464 3333

Samaris.Huntington-Thresher@bromley.gov.uk

Bob Evans 01689 853002
robert.evans@bromley.gov.uk

Chelsfield Village Society

cvscontact@googlemail.com

Chelsfield Village Voice

villagevoice@chelsfield.org

Chelsfield Primary School

01689 825827

BT Line Faults	0800 800151
Electrical Power Failure (EDF)	08007838866
Thames Water Emergencies	0845 9200800
Transco Gas Emergency Service	0800 111999
Orpington Police Station 1000-1800 Monday-Saturday	0300 1231212
Samaritans	01689 833000
NHS Direct	0845 4647
Safer Neighbourhood Team	020 8721 2605

DATES FOR YOUR DIARY

WEEKLY EVENTS

EVERY MONDAY

Chelsfield Methodist Hall
Windsor Drive

Iyengar Yoga Classes

9.30am-11.00am

Suitable for Beginners

Contact Denise on

01689 853215

EVERY TUESDAY

Parish Room Skibbs Lane

Mums & Tots Group

10.00am-12.00 midday

Details 01959 535110

EVERY TUESDAY

Chelsfield Village Hall

Art Workshop

“Art for the Fun of it”

4.00pm-5.00pm

5 years and upwards

£8.00 per child

Details 01959 532761

geraldinefranklin @bt.com

EVERY TUESDAY

Five Bells

Charity Quiz Night

from 9.00pm

EVERY WEDNESDAY

Hatha Yoga Classes

10.30am-12.00am

Contact Pam Keeper on

01732 458930

EVERY WEDNESDAY

Rugby for Girls

Any Age

Evening training from

September to May

Contact Kevin

0208 289 8566

SPECIAL EVENTS

Thursday 6th May

(1st Thursday Each Month)

Five Bells

Live Jazz Thursday

“Just Friends” will be

playing their monthly set

Saturday 8th May

Five Bells

65th Anniversary of VE Day

Activities throughout the day, Street Party, Wartime artifacts, 1940’s Show.

Come RAIN OR SHINE! All

money raised will go to

“HELP THE HEROES” charity

Thursday 13th May

(2nd Thursday Each Month)

Brass Crosby Room

Crafts For All

Come and Try Your Hand at

a Range of Crafts

11.00am

Saturday 15th May

Chelsfield Riding School

Dressage

Demonstration

2.00pm

Fundraising to Support

Dressage Team

Wednesday 19th May

Parish Room

Internet Cafe

2.30pm - 4.30pm

Thursday 20th May

(3rd Thursday Each Month)

Brass Crosby Room

Local History Group

10.15am—Midday

Saturday 22nd May

Village Green Cricket Ground

Cricket Match

Chelsfield vs Blindley Heath

2.30pm

Thurs 27th May-Sun 30th May

Chelsfield Village Hall

A Wedding Story

by Briony Lavery

a Production by

The Chelsfield Players

see front cover

Saturday 29th May

Hollybeech

Railway Open Day

Phone Phil or Jayne on

01689 858634 for more

details and address

Sunday 30th May

Five Bells

Ade’s Birthday Party & CAMRA Presentation

We’ve managed to get the duo “Farlane” back again

Music starts at 9.00pm Pub

closes at midnight. Presenta-

tion at 8.00pm

Bank Holiday Monday

31st May

Chelsfield Riding School

CEC Jumping

Spectators Welcome

Thursday 3rd June

(1st Thursday Each Month)

Five Bells

Live Jazz Thursday

“Just Friends” will be

playing their monthly set

Saturday 12th June

Rectory Gardens

St Martins Church

Fete

Saturday 12th June

Five Bells

World Cup Football

England v USA

American themed night for food with the sounds of Mo-town

Sunday 13th June

Chelsfield Village Hall

Summer Morning at

Bucks Cross

(A Bromley Diversity Event)

Meet 09.30am outside the

village hall to wander

through the farmland land-

scape. Led by BCS. Adults

£1.60 Children £1.00

Sunday 13th June

Chelsfield Riding School

CEC Dressage Cham-

pionship

1.00pm

Spectators Welcome

Saturday 19th June

Village Green Cricket Ground

Cricket Match

Chelsfield vs Graveney

2.00pm