



May 2017

Supported by



Chelsfield  
Park  
Hospital

St. Martin of Tours

# Car Boot Fair

Church Road Chelsfield BR6 7RF

Saturday 6th May

9am ~ 12 noon

Set-up from 8.30am

Pitch £10

Bacon Rolls - Hot Dogs - Cakes - Tea and Coffee

[social@stmartinchelsfield.org.uk](mailto:social@stmartinchelsfield.org.uk)

The Newsletter and "What's On" Guide for  
Residents & Friends of Chelsfield Village

A Medley of Moths	2
Miller Mutterings	4
St Martins Summer Fete	5
Open Garden	6
Dawn Chorus Walk	6
Jam Jars Available	6
World War 2 Memories	7
Crime Up	8
Broadband Update	8
Fly Tipping	8
Burntwood Concert	9
A Lady Misland - Review	10
Chelsfield WW1 Casualties	10
Yet More Kites!	11
Kites, Litter and Flints	11
Chelsfield Village Fair	12
Pastime Historical Dance	13
Playford Ball	14
Bromley Events	15
Useful Contact Numbers	15
Dates for your Diary	16

## PLEASE TELL US ABOUT YOUR EVENTS

We need your news, reports, stories, photos, diary events, cartoons, etc. to continue to make the Village Voice interesting and useful

Please send anything you feel suitable for the June 2017 issue to:

[chelsfieldvillagevoice@gmail.com](mailto:chelsfieldvillagevoice@gmail.com)

or post to:

Chelsfield Village Voice  
2 Bucks Cross Cottages  
Chelsfield Village

BR6 7RN

by Monday 29th May 2017



## A Medley of Moths

A few months ago it became apparent that amongst our community we had our very own lepidopterist! Quietly at night he draws in his prey with his very own equipment!

We are talking moths here before anybody calls the police... So, one February Monday afternoon I went to visit Lester Barnes at the Orpington end of the village and we went through a number of images of his favourite moths and told me how he had taken an interest in insects in general as a child and now during warm summer evenings attracts moths with a device called a 'Robertson moth trap' which uses a mercury vapour light bulb.

Apparently the sort that would require the careful use of welder's goggles by all accounts!

They are drawn in and trapped and usually take refuge under egg boxes and the like. Lester then photographs any that are unusual or take his interest and releases them back into the wild taking care to avoid the attention of local birds.

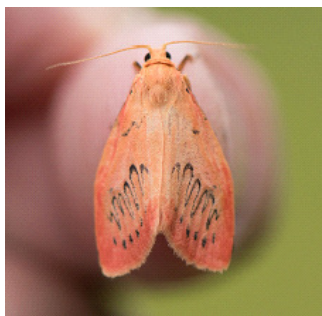
So, the first question is

'what's the difference between a butterfly and a moth? I had always assumed that butterflies fly during the day while moths fly at night. It, as always, is a little more complex than that. A major decider is that butterflies rest with their wings folded upwards while moths leave them either close to their bodies rather like a beetle, or out open parallel to the surface they are perched on.

However, even this is not definitive and an even more accurate delineator between the two is the nature of their antennae. Butterflies have thin antennae with a small bulb at the end while moths can have any manner of antennae shapes.

Also, interestingly, Lester explained that some countries use the same name for butterflies and moths while some use the equivalent of the words 'night butterfly' for moth. Although this is not entirely accurate as some moths fly during the day. In terms of the local moth population Lester said that in the village we probably have 250 different species of moth and he picked out three of his favourites which I will describe below.

### Rosy Footman (*Miltochrista miniata*)



This moth is a favourite of Lester's for no other reason than for its rosy/orange colour although it can also be found sporting yellow. It can be found from June until August but only lasts as a moth for about a week and eats lichen. This is not a rare moth in the village and can be found quite regularly.

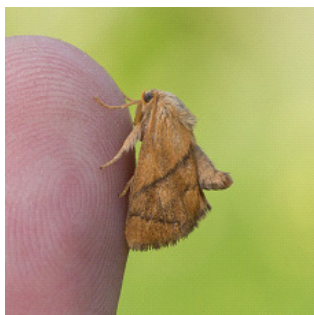
### Emperor moth (*Saturnia pavonia*)



This species (often called the Great Peacock moth) of moth is one of the largest in Britain and

indeed, some of its foreign cousins are some of the largest insects on the planet. Its colouring suggests that it is a snake to be avoided with two eyes and the upper jaw showing. It eats heather, brambles and birch and is a rare moth taking Lester three years to find when he first moved to the village.

**Festoon Moth** (Apoda limacodes)



This is a rare moth being found in Belgium and the Netherlands and between Dorset and Kent in the UK. It is listed on the National 'scarce' list B meaning that there are between 31 and 100 per 10 square kms.

So those are three of Lester's favourites but during my research I found a couple of stories that I think will be of interest. The first is about researchers at Cambridge University who have discovered that the larvae

of the *Galleria mellonella* moth, which eats wax in bee hives, can also degrade plastic.

What with about 80 million tonnes of polyethylene being produced every year around the world, this looks like an interesting ability. Apparently within hours this moth can make an impression on plastic that time, sunlight and water would require centuries to accomplish. The question that researchers are currently trying to deduce is what within the moth's stomach allows this process to take place and can it be industrialised. If so, then waste plastic may eventually be recycled into polyesters and ethylene glycol which is used as an anti-freeze.

The second story I thought was of interest was about a newly discovered moth found in the archive collection of the University of California. This moth has a crown of yellow and a piecing stare and this newly discovered moth could only have been named after one man. Yes, this moth has been christened 'Neopalpa donaldtrumpi' in honour of America's 45th president Donald Trump. Both Trump and this

moth share a similar habitat, stretching across the USA although ironically it can also be found in Mexico!

I'll finish on a question. Why do moths become attracted to a candle flame? It seems that nobody is entirely sure. There's the possibility that moths use bright lights like the moon or sun as directional guides during migrations. Why then to moths that do not migrate, also get drawn in? Another suggestion is that the flame may be giving off the same frequency of light as the pheromones of a female moth (apparently they do indeed give off a very faint light). Unfortunately, closer inspection shows that candles and pheromones do not share the same frequencies! So, like many of us, maybe there are just attracted to the bright lights in the same way that we are when we pump money into 'one armed bandits' (have you noticed how they brightly flash like some sort of disco)? That doesn't happen by accident, they know it draws us in.... like moths to a flame! With thanks for Lester's help this month.

Steve Fuller  
May 2017

## Mutterings From The Millers

One swallow arrived on the 30<sup>th</sup> March, which was quite early for here but then we had to wait another three weeks before two more arrived. We are not sure why this happened but probably due to cold fronts over Europe, I'm sure someone in Chelsfield knows. Hopefully more of these lovely summer visitors will be arriving very soon.



The winter barley is at what we call the "paintbrush" stage. This means that the awns have just started to emerge from their sheath. This stage is about a fortnight earlier than usual, which according to our Agronomist is due to the mild weather we have had since the start of the New Year. Hmmm not

very mild today as it is hailing with a northerly wind! Whilst on the subject of the weather, as you can imagine, we are anxious to have some rain but as we have direct drilled this year and not ploughed, we are not in such a desperate situation as farmers that have ploughed. Some crops around the country have not germinated through lack of moisture. Certain types of cereal required more moisture than others, spring barley seems to germinate with very little moisture whereas spring wheat and spring oats seem to require a lot.

As our peas were planted deeper they have all germinated, as you may have seen, and all they now require is some warmth to make them race away. The winter wheat is just before "flag leaf" stage, which means this is the last leaf before the ears come out. The flag leaf on winter wheat is the most crucial leaf to keep clean as it produces approximately 50% of the yield of the ear by feeding it. We keep it clean by

applying a fungicide. On barley it is the awns that do all the work on yield.

The grass could do with a good drink too. We don't usual have much problem with rats but have noticed a few around the yard recently. They appear from the fields mainly to find water so hopefully when the rain (!) does comes they will disappear. In other words, we need rain!

Deliveries of hay and straw have slowed down as most people have put their horses out into paddocks but the electrical work is still on going and the boys are also doing a big clear out job in the old barn.

I did replace my chickens that were eaten by the fox but unfortunately they only survived two days. The electric fence broke the next evening and the fox had dinner again!!!

We didn't have any thunder in April but hope for rain in May. Wet May, long hay.

*Chris Miller*



# St. Martin's Chelsfield Summer Fete Saturday 10<sup>th</sup> June

Entry  
50p

12 noon – 4.30pm

Rectory Gardens, Skibbs Lane, Chelsfield



Teas, BBQ, Pimms Tent,  
Bouncy Castle, Toys, Books  
Plants, Bric-a-brac, Cakes



May  
Queen



Welly Wanging,  
Coconut Shy, Live Music,  
Bottle Stall, Raffle  
and lots more



Fundraising event for St. Martin of Tours, Chelsfield

Registered charity no: 1131573



## Open Garden

We are holding, and would like to invite the readers of Chelsfield Village Voice to our first Open Garden of 2017.

The garden is at:  
10 Homestead Road,  
Chelsfield,  
BR6 6HW

a relaxing afternoon

*Rosemary  
Volunteer Community  
Fundraiser*

The garden will open on Sunday, 28th May from 2.0pm - 5.0pm in order to raise funds for Demelza Hospice Care for Children.

There will be refreshments, plants and other stalls.

It is a beautiful garden and well worth coming for



**Demelza**  
Hospice Care for Children

## Dawn Chorus Walk

**Date:** 7 May 2017

**Location:**

*Meet in the car park off  
The Highway,  
Chelsfield Green.*

**Postcode:** BR6 9DQ

**Time:** 06:00 - 07:00

**Cost:** Free



celebrate the wonder of birdsong in Bromley. Organised as part of International Dawn Chorus Day:

<http://idcd.info/>

Organised by the RSPB Bromley Local Group

**Email:**  
[bromleyRSPB@gmail.com](mailto:bromleyRSPB@gmail.com)

**Phone:** 07392 790 719

**Website:** [www.rspb.org.uk/groups/bromley/](http://www.rspb.org.uk/groups/bromley/)

**Facebook:** [www.facebook.com/RSPBBromley/](http://www.facebook.com/RSPBBromley/)

Join us for a walk on International Dawn Chorus Day, the worldwide celebration of birdsong...

contains a surprising diversity of habitats including woods, hedgerows and meadows – with panoramic views towards London.

We will walk around Chelsfield Green. Surrounded by the rolling farmland of the North Downs, the Green

The Green is a local hotspot for woodland, scrub and farmland birds, so is an ideal place to

## Jam Jars Available

Interested in jam making this summer, or preserving fruit? If you would like some Bonne

Maman jam jars - the wide necked ones with the red and white lids, then ring me on 01689

820942. There are about 20 or so. I can drop them round if you are local.

*Pam Temple*

## Some Memories of WWII in Chelsfield

I was seven years old when war broke out, and the following year I started attending Warren Road School, Orpington.

There were brick air raid shelters along one side of the asphalt playground, and I remember being hurried into them when the air-raid sirens went. We sat on narrow wooden benches along the walls and as the lights were not very bright the time was passed in playing games such as 'I spy'.

In winter the shelters were pretty chilly and we were always glad to hear the all-clear being sounded. Sirens were mounted on high metal towers, the noise was deafening if you were unlucky enough to be underneath when one went off.

To help the war effort there was great competition to buy savings stamps, class against class, a large chart being kept to show who was in the lead week by week. Values of 6d. (2½p.) and 2/6d. (12½p.) were available. When a page in a savings stamp book was filled it could be taken to the Post Office and transferred to one's savings account. To encourage the campaign there would occasionally be a special week such as 'tank week' or 'spitfire week' nationally, and one

memorable day tanks and armoured cars actually came to the school, children were packed aboard and we were driven around the local roads. We cheered them deafeningly when they drove away down the school drive.

At the end of one long summer holiday a bomb took the roof off the school, thus extending our holidays considerably while it was repaired.

In 1943 I moved up to the Grammar school in Bromley. The brick shelters were much the same, but we were expected to continue serious study during air raids which was not easy.

At home we did not have an air raid shelter, but the French-windows of our dining room were boarded over and then protected with a wall of sandbags. The chimney was stuffed up with underfelt against gas attacks, and the curtains in that room remained closed until the end of the war. When raids were bad I slept on a mattress in the cupboard under the stairs, otherwise I slept in my bed in the dining room for several years, falling asleep to the sound of the local ack-ack guns.

In the morning I would search the garden for pieces of shrapnel or the silver ribbon called 'window' which

was dropped by aircraft to confuse the Radar. I had a shoe box full of metal pieces by the end of the war, bright when picked up, it soon went rusty.

I believe at one time my mother and father took their turns on fire watching duty in our road overnight in case of incendiaries, and we somehow had possession of a stirrup pump so that occasional practices were held in our garden to make sure everyone was proficient in its use. The company my father worked for in the City of London employed a fire watcher during the Blitz and the male employees took turns of duty with him, sleeping on camp beds between raids.

Disruption on the railway meant we never knew what time he would get home next day or if he was safe, as few people had telephones. My mother never showed her anxiety, but looking back I can see that she must often have been worried.

The office, which was near St. Paul's Cathedral, got a direct hit and was burnt out eventually, luckily with no loss of life. My father brought home a bunch of rust-red keys still attached to a crisped leather key holder which had been found in the office safe amid the ruins.

*Pam Francis*

## Crime Up

We have possibly passed another low crime cycle, as all across the Met Police area, things seem to be on the increase again.

In the Village we have had a car stolen from a driveway, sheds broken into, tools stolen, and even a stone step taken from a

front door pathway. Fly tipping is also increasing with loads being dumped in the roads and even in the Church Car Park.

At this time we need to be constantly aware of people who are out of place. It is better to report suspicious behaviour, rather than to find out that an incident

has occurred. Please dial 999 or 101 if you want response.

Our local Police are there to respond and can do so if they can be advised.

*John Leach*  
07711 304965  
*Safer Neighbourhood Watch*

## Broadband Update - Getting Closer

I had my latest monthly phone call with Openreach (BT) on 6th April. I'm told some work has started in the area already, with the laying of fibre cabling etc.

I've been given a date of 15th May for the start of the installation of the all-important street cabinet. This work will continue over the following two weeks, with the necessary fibre work, and the provision of electrical power to the cabinet. Following this there will be

a period of testing, and after that, Openreach will alert service providers that fast broadband is now available in the area.

I will try to find out which ones will be offering service (eg BT or Sky or Talk Talk etc). I still expect June as a date when the service providers can start to offer a service.

Remember that homes will be connected to the fast broadband service cabinet

using existing copper telephone lines – this is the standard Openreach approach. The further away from the cabinet you are, the lower the broadband speed will be due to the distance over copper telephone lines, meaning some people (whilst getting an improved speed) may not get true 'super fast'.

My next call with Openreach is on 25 April.

*Steve Barnes*

## Fly Tipping at St Martin's Church

Many of you will have seen the large piles of fly tipped rubbish at the entrance to St Martin's Church, along Church Road. At the time of going to press, we heard that some paper work found in the rubbish, together with

some smart detective work, tracked down the culprit and the huge pile has been cleared up. Perhaps more details by the next edition. The image shows only a part of the dumped rubbish





Sunday 18th June 2017 - 2:45pm  
Well Hill Mission Church



Classical,  
television  
themes, folk,  
pop and rock  
in unique  
arrangements  
for cello/  
electric cello  
and keyboards

burnt  ood

featuring Helen Griffiths (cello) and Dave Griffiths (keyboards)

Tickets **£7.50**  
includes cream  
tea

Please bring your  
own picnic chair

Al fresco if fine  
weather

Tickets:

Carol & Chris Courtney  
01959 535022

Julia & Gerry Sparkes  
01689 823749

Vera & Gerry Walker  
01689 606738

## A Lady Misaid - Review

This spring production by the Chelsfield Players was written by that well known broadcaster and comedian (by us older folk) Kenneth Horne and it was also made into a film in 1958. Kenneth Horne thought that humour came from dialog rather than the visual gags that we often see in plays in these more recent times.

This version of the play is set in 1953, and involves two sisters living a comfortable existence in a recently purchased house. All changes with

the arrival of the police who are looking for the missing wife of the previous owner. This results in the digging up of the cellar and most of the garden, - and finding the 'wrong' skeleton.

There is also confusion with peoples' identity and relationships.

The small cast did well with a rather restricted script. What may have shocked in the 50's does not have the same result today.

Two performances that stood out were Madeline

McCubbin as Mrs Small the 'daily help' with her wonderful pronunciation, and Andrew Haggerty as the possibly murdering husband with a chequered history.

### *A View from the Stalls*

The Chelsfield Players Summer production will be 'Salt'. A dark comedy, where selfless generosity descends into compromising patronage – together with bouts of competitive cooking.

Performances  
2nd-5th August 2017

## Chelsfield's Casualties From The First World War

This month there is one name from the war memorial in St Martin's to commemorate - M/16987 Percy Harry Thorpe, who served in the Royal Navy as an Engine Room Artificer 4th Class on HMS Tyne, and died on 22 May 1917 aged 29.

He is special for us because he is not buried at sea, or in a cemetery in a different country, but in St Martin's churchyard. Looking at the records it appears he was invalided out of service on 23

August 1916 for tuberculosis, so perhaps he died at home but was recognised as a casualty of war because of his service. I can imagine the conditions he worked in could have contributed to his condition.

Percy Thorpe's wife is recorded as Edith Emily Thorpe of 2 Oak Road, Green Street Green, and his parents were John and Emma Thorpe of Bilsington, Ashford. I think Percy and his wife may have had at least

one child, as there is an Irene Pedder buried in the same plot and her maiden name was Irene Thorpe; she was born in 1913.

The Royal Naval record of Seaman's Services says Percy was born on 8 June 1887 at Ashford in Kent. His occupation is given as Fitter and Turner. He enlisted on 12 November 1915 and served at HMS Pembroke II, then on HMS Tyne, and then at HMS Pembroke II again. His

Royal Naval occupation, Engine Room Artificer [ERA], was a fitter, turner or boilermaker, competent in the workings of engines and boilers, and trained in the maintenance and operation and uses of all parts of marine engines. ERAs were the senior maintainers and operators of all warship mechanical plant. HMS Pembroke II is interesting because it was a Royal Naval Air Station, at Eastchurch, so perhaps Percy was also involved in the maintenance of



aircraft for this precursor of the RAF. HMS Tyne was a depot ship, which among other things act as a floating workshop for

small mobile units.

Looking at his early life, on the census in 1911 Percy Thorpe is living with his brother, who was a Publican, in the White Horse pub in Long Acre, Covent Garden. Percy's occupation is given as an Engineer for a firm of button makers. Further back in 1901 he's living with his parents in Hambeldon, Surrey, and his father John is a Gamekeeper.

*Philippa Rooke*  
[pjrooke@hotmail.com](mailto:pjrooke@hotmail.com)  
 07826 516481

### Yet more Red Kites!

Some more Red Kite records for Steve Fuller, from up the hill in Cudham. I don't see them very often.

12/4/14  
 Cudham  
 Don't see these at home very often. Was being mobbed by Ring-necked Parakeets

21/4/14  
 Grid Ref: TQ4460 -Again!  
 8/3/15 Cudham  
 mobbed by 2 magpies  
*Ewan*

I saw one 16:15 on Thursday 13th April about 30 feet over the back of

the Avalon Road houses opposite the fire station. (I am a birder for over 30

years - Just so you now!)

*Jo East*

### Kites, Litter and Flints!

On the subject of red kites which has been a bit of a highlight in the Village Voice of late, I can now say that I have personally seen my first red kite! It was flying above the field between Cannock School and Maypole Rd. Great to

see the way they are travelling across the country reclaiming their former territory.. Now litter, as warmer weather is arriving it seems that the litter is increasing. I have a theory that a lot if it comes from

not only passing motorists but also an unexpected source, namely cyclists. A lot of the litter seems to be either energy drinks of plastic water bottles. Maybe the cyclists watch the Tour de France and see the competitors

grabbing a bottle from a refreshment point, take a swig and then lob the bottle over their shoulders and somehow it has become normalised behaviour. So, if you are a passing cyclist and you've stopped at one of our local pubs and are reading this piece, then please think about what you may have

left behind. It will either make the day out for the next cyclist a little less enjoyable or somebody within the village, or eventually the council (at my expense), will have to pick it up behind you. So, please take it with you. Thanks.

One last subject. After having had a flint wall built

last year, I now seem to have been left with about a half ton of flints that I have no use for. How this much flint accumulated I have no idea! Anyway, if anybody within the village would like it for free then please let me know via the Village Voice, thanks.

*Steve Fuller*

## **Chelsfield Village Fair - 8th July 2017**

As always, the preparations for this year's Fair are rumbling along in the background and we are pleased to announce that our headline charity this year will be St Christopher's who are marking their 50th Birthday. Croydon Steel Orchestra, Force 10 Big Band and the Green St Green May Queen are coming as ever and we welcome Willows Birds of Prey centre for the first time this year. Based at Coolings Garden Centre in Knockholt, we are delighted that they will be able to display for us. Unfortunately Eagle Heights were unable to appear this year and we are pleased that this relatively new outfit are able to be at the Fair. My main concern at this time of year is the Flying Display and I feel I ought to share with you where

we are with this. Most of you will have seen the news regarding the Air Accident Investigation Bureau's report on the Shoreham Hunter Crash and the aftershocks of this continue to be felt throughout the Air Show Industry. I attended a two day course in Shrivenham in Wiltshire to become an accredited Flying Display Director (FDD) and it was, at times, a quite depressing. The Civil Aviation Authority are in quite a bit of turmoil, as evidenced by the twenty question exam we had to sit on Day Two. After the fractious nature of Day One, this twenty question exam became a seventeen question exam overnight as CAA weren't sure they had the answers to three of the questions correct themselves! Anyway, while some of the regulation changes have

been sensible, many still smack of knee-jerk and contribute nothing to safety in my opinion. How does this affect Chelsfield?

My honest answer at the moment is "I don't know". I have submitted a document to the CAA which contains an on-foot and aerial photographic survey of the area in order to illustrate the complete lack of satisfactory locations around the village from which the public can congregate to watch the flying without paying to get in. I am hoping to speak to the CAA in the next few days to get some unofficial guidance on how best to proceed.

The new regulations require that the FDD designate a display area rather than a line denoting the display axis. This display area is the area

where aerobatics can take place down to the minimum display altitude and outside of this area the aircraft cannot perform aerobatics and must not fly below 500 feet. The Display Area should have no occupied buildings in it and this is where I may come a-knocking on a few doors. Dunsfold Air Show have a few houses in their display area and they have managed to mitigate this by obtaining from the householders, a written assurance that during the display, their premises will be unoccupied. Much as this is, in my opinion, a quite ridiculous over-caution, I may have to attempt the same if I apply for an increased display area. The increased display area may and I stress the 'may', allow me to have the Spitfire display in addition to the Extra 330SC.

If the CAA indicates that

such an approach would be looked upon favourably, I will be paying a few people a visit with some free admission tickets and appealing to their better nature. The houses affected will be those at the junction of Maypole Road and Bucks Cross Road. The displays only last 20 minutes so it does seem daft but if that's what it takes, that's what I'll do. The chances of any property being damaged are negligible; the unlimited aerobatics performed by the Extra 330 are confined to a much smaller area over open land and the Spitfire's gentle rolls and wing-overs are such that an engine failure would allow the pilot to put the aircraft down safely in any number of tracts of open land around the village. However there is also a not inconsiderable chance that the CAA will advise against any flying at all

and at that point I will reluctantly give up. As you can imagine, I have spent huge amounts of spare time over the last 18 months working on this but it's quite stressful and unless it all becomes considerably less painful, I am hoisting the white flag. Hopefully it won't come to that.

Anyway, it will be a cracking Fair, regardless of what happens in the sky and I urge you to support it. Please check out our Facebook page: [facebook.com/chelsfieldfair](https://facebook.com/chelsfieldfair) and we still have pitches left if you would like to trade on the day. And we will have Prize Draw tickets on sale soon so, if approached, please dig deep!  
More news next month

*Dave Griffiths  
Vice Chairman  
Chelsfield Village Fair*

## Pastime Historical Dance

I am writing on behalf of Pastime Historical Dance, a group that regularly practises in the village hall on Bucks Cross Road. We are holding our annual Playford Ball soon and hope that you will list it for any villagers who might

enjoy an evening out. To accommodate more dancers, this year we are holding the ball in Beckenham.

Our dances are mostly English country, all are taught and called and

there is no requirement for costume. We just want people to come along and have a good time. I've attached a flyer with all the details.

*Sharon Butler  
Pastime Member*

Pastime  
Historical Dance

*PLAYFORD BALL*

*1st JULY 2017*

*7pm to 10.30pm*

*St James Church Hall*

*St James Avenue, Elmers End, BR3 4HF*



*Come and dance the night away!*

*Tickets £10 including a light supper.*

*Everyone welcome.*

*Costume is great fun, but not required.*

*All dances will be called.*

To book your evening, contact Alison Ede.

Tel: 01322 553094 or email:

alisonede67@gmail.com

We would like to thank  
**CHELSEFIELD PARK HOSPITAL** for their  
sponsorship printing the Chelsfield Village Voice



## Bromley Events

### John Lubbock Gallery - Guided Tour

**Date:**

10 May 2017  
14.00 – 14.30  
and 22 May at  
11.00 – 11.30

**Location:**

John Lubbock Gallery,  
2nd Floor, Bromley  
Central Library, Bromley

**Cost:** Free

Drop in event.

**Event Organiser:**

Bromley Historic Collections  
Telephone:020 8461 7170  
[historic.collections@bromley.gov.uk](mailto:historic.collections@bromley.gov.uk)

### This is Bromley Gallery Guided Tour

**Date:** 15 May 2017

**Location:** First Floor,  
Central Library, High  
Street, Bromley, BR1  
1EX

**Time:** 11:00 - 11:30

**Cost:** Free

Gallery tour...

**Event organiser:**

Bromley Historic Collections

**Telephone:**

020 8461 7170

**Email:** [historic.collections@bromley.gov.uk](mailto:historic.collections@bromley.gov.uk)

### Child Car Seat Checking Event

**Date:** 10 May 2017

**Location:**

Sainsburys Locksbottom,  
Pallant Way, Orpington  
BR6 8NZ

**Time:** 09:30 - 15:00

**Cost:** Free event

Have your seat checked by  
experts or get impartial  
advice, get answers to your  
questions about changes in  
the law.

**Event Organiser:** LBB

Road Safety team

Email: [road.safety@bromley.gov.uk](mailto:road.safety@bromley.gov.uk)

## USEFUL CONTACT NUMBERS

### Bromley Council

Main switchboard:

020 8464 3333

E-mail: [fixmystreet.com](mailto:fixmystreet.com)

Opening hours Monday to  
Friday 8.30am to 5.30pm

Address: Civic Centre,  
Stockwell Close,  
Bromley, BR1 3UH

### Reporting Problems to the Council

Can be reported via the  
CVS website, or if urgent by  
phone out of hours  
Emergency Duty Team  
020 8464 4848.

### Neighbourhood Watch

John Leach 07711304965.

### NHS Non-Emergency 111

### Chelsfield Primary School

01689 825827

### BMI Chelsfield Park Hospital

Main Reception

01689 877855

Physiotherapy

01689 885920

Outpatients

01689 885905

### Councillors

Keith Onslow

[keith.onslow@bromley.gov.uk](mailto:keith.onslow@bromley.gov.uk)

Samaris Huntington-Thresher

020 8464 3333

[samaris.huntington-thresher@bromley.gov.uk](mailto:samaris.huntington-thresher@bromley.gov.uk)

Lydia Buttinger

[lydia.buttinger@bromley.gov.uk](mailto:lydia.buttinger@bromley.gov.uk)

### Chelsfield Village Voice

[chelsfieldvillagevoice@gmail.com](mailto:chelsfieldvillagevoice@gmail.com)

### EDF Electrical Power Failure

Call 105 or 0800 316 3105

BT Line Faults 0800 800151

**Thames Water** Emergencies

0800 714614

### National Grid (Gas)

Emergency (leaks) 0800 111999

**Bromley Police Station & Police non emergency** 101

### Samaritans

Freephone 116123

### Safer Neighbourhood Team

020 8721 2605

[chelsfield.prattsbottom.snt@met.police.uk](mailto:chelsfield.prattsbottom.snt@met.police.uk)

[@met.police.uk](mailto:chelsfield.prattsbottom.snt@met.police.uk)

### Chelsfield Village Hall

(bookings) **01689 831826** or  
email to:

[cvhlettings@gmail.com](mailto:cvhlettings@gmail.com)

### Chelsfield Players

[info@chelsfieldplayers.org](mailto:info@chelsfieldplayers.org)

[www.chelsfieldplayers.org](http://www.chelsfieldplayers.org)



## DATES FOR YOUR DIARY

### WEEKLY EVENTS

#### EVERY MONDAY

Chelsfield Methodist Hall,  
Windsor Drive

#### Iyengar Yoga Classes

9.30am-11.00am  
Suitable for Beginners  
Contact Denise 01689 853215

#### EVERY MONDAY

Chelsfield Village Hall and  
Brass Crosby Room

#### Chelsfield Housemartins

Monday Afternoons, for local people  
who are unable to go out without  
help.

#### EVERY MONDAY

Chelsfield Village Hall

#### Pilates Class

6.30pm-7.30pm  
Contact Francesca on 07791073445  
iopilatesuk@gmail.com

#### EVERY MONDAY, TUESDAY, WEDNESDAY & SATURDAY

Christ Church Hall, Charterhouse Rd

#### Pilates Classes

Monday 6.55pm Beginners  
Tuesday 7.45pm Beginners  
Wednesday 9.15am Mixed Ability  
Wednesday 1.30pm Over 60's  
Saturday 8.45am Beginners  
Saturday 10am Intermediate  
Contact Sally 07786 035640  
orpingtonpilates@gmail.com see  
www.orpingtonpilates.co.uk  
for venues and more info

#### EVERY TUESDAY

Brass Crosby Room

#### St Martin's Toddler Group

10.30am-12.00 midday  
Contact Sarah Ford: 01689 853415  
stmartinstoddlers@gmail.com

#### EVERY TUESDAY

Chelsfield Village Hall

#### Pilates Class

09.00am - 10.00am and  
10.00am -11.00am  
Contact Francesca on 07791 073445  
iopilatesuk@gmail.com

#### EVERY TUESDAY

The Chelsfield (Windsor Drive)

#### Quiz Night

From 7.30pm Contact 01689 600656

#### EVERY TUESDAY

Five Bells

#### Charity Quiz Night

from 9.00pm

#### EVERY WED THURS & FRI

Chelsfield Methodist Church Hall,  
Windsor Drive

#### Pilates Classes & Pre & Post Natal Pilates Classes

Wed 6.50-7.50pm & 8.00-9.00pm  
Thursday 8.20-9.20pm  
Friday 9.35-10.35 & 10.45-11.45am  
Post Natal Pilates 12-1.00pm  
(Babies Welcome)

Call Bethany Lucas 07415 638546

bethanylucaspilates@gmail.com

Further classes at:

[www.bethanylucaspilates.co.uk](http://www.bethanylucaspilates.co.uk)

#### EVERY WEDNESDAY

#### Hatha Yoga Classes

10.30am-12.00am  
Contact Pam Keeper 01732 458930

#### EVERY THURSDAY

Chelsfield Village Hall

#### Class Street Dance

4.30pm-6.00pm Boys & Girls all Ages  
Info: Clare 07960 865518  
[www.class-streetdance.co.uk](http://www.class-streetdance.co.uk)

#### EVERY THURSDAY

Chelsfield Village Hall

#### Pilates Class

9.00am - 10.00am and  
6.30pm-7.30pm  
Contact Francesca on 07791073445  
iopilatesuk@gmail.com

#### EVERY FRIDAY

Chelsfield Village Hall

#### Pilates Class

3.00pm-4.00pm  
Contact Francesca on 07791073445  
iopilatesuk@gmail.com

#### EVERY SUNDAY

The Chelsfield, Windsor Drive

#### Live Singer

5.00pm-8.00pm  
Contact 01689 600656

#### SPECIAL EVENTS

#### Saturday 4th May (1st Thursday each Month)

Five Bells

#### Live Jazz with Just Friends

Dave and the guys play an amazing  
mix of songs. Music from 8.30pm

#### Friday 5th May

Five Bells

#### Live Music with Willie Austen

Willie returns after too long an ab-  
sence!. Music from 8.30pm

#### Saturday 6th May

St Martin's Church

#### Boot Fair

9.00am-12 Noon  
Set Up from 8.30am

#### Sunday 7th May

Bishop Justus School  
Magpie Hall Lane Bromley

#### Mother Daughter Day

9.30am-4.00pm Workshops,  
Stalls, Pamper Treatments

#### Monday 8th May

Brass Crosby Room

#### St. Martin's Memory Cafe

2 - 4pm. Contact Jackie McCann  
01689 854119  
[memorycafe@stmartinchelsfield.org.uk](mailto:memorycafe@stmartinchelsfield.org.uk)

#### Wednesday 10th May (2nd Wednesday of Month)

Chelsfield Village Hall

#### Afternoon W.I.

Newcomers Welcome  
Contact Gwen on 01689 834879 or  
Sue on 01689 827407

#### Wednesday 10th May

Five Bells

#### Open Mic Night

So all you budding musicians out  
there, come along and have a go!  
Starts at 8.30pm

#### Tuesday 16th May

#### (3rd Tuesday of Month)

Chelsfield Village Hall

#### Evening W.I.

Newcomers Welcome From 7.45pm  
Contact Madeline 01689 891533

#### Wednesday 24th May

Five Bells

#### Open Mic Night

So all you budding musicians out  
there, come along and have a go!  
Starts at 8.30pm

#### Thursday 25th May

#### (Last Thursday Each Month)

Brass Crosby Room

#### Local History Group

Patrick Helicar will give a talk on "The  
Day Amy Dropped In -Pioneer Aviator  
Amy Johnson's Chelsfield  
Misadventure" Starts 10.30am

#### Wednesday 24th May

Five Bells

#### Open Mic Night

So all you budding musicians out  
there, come along and have a go!  
Starts at 8.30pm

#### Sunday 28th May

10 Homestead Road, Chelsfield

#### Open Garden

2 - 5pm raising funds for Demelsa

#### Thursday 1st June

#### (1st Thursday each Month)

Five Bells

#### Live Jazz with Just Friends

Dave and the guys play an amazing  
mix of songs. Music from 8.30pm

#### Wednesday 7th June

Five Bells

#### Open Mic Night

So all you budding musicians out  
there, come along and have a go!  
Starts at 8.30pm

#### Saturday 10th June

Rectory Gardens, Skibbs Lane

#### St Martin's Summer Fete

12 Noon to 4.30pm

#### Sunday 18th June

Well Hill Mission Church

#### "Burntwood" Concert

from 2.45pm Tickets £7.50

#### Tuesday 13th June

Chelsfield Village Hall

#### Floral Workshop

Tied Flowers From 7.30pm

#### Saturday 1st July

St James Church Hall, Elmers End

#### Playford Ball

7 pm - 10.30pm Tickets £10

#### Saturday 8th July

Chelsfield Recreation Ground

#### Chelsfield Village Fair

From 12.00 Midday