



# **The Newsletter and “What’s On” Guide for Residents & Friends of Chelsfield Village**

October 2011

## **In This Issue:**

The Weasel	2
Road Accident Map	3
Very Advance Notice!	3
Safer Bromley	4
Village Gates	5
Chelsfield Bike Ride	6
Bike Ride Funds	6
Produce Show Report	7
Faster Broadband	8
New Burial Ground	8
Curiouser & Curiouser	9
Bromley wants your View	9
History of the School (6)	10
In From The Cold	11
Music at the Village Hall	12
Letter From the Mayor	13
Bromley Reel History	13
Memories	14
Garden Train	14
Chislehurst Bridge Road	15
Useful Contacts	15
Dates for Your Diary	16



## **Willie Austen and Family**

Superb acoustic pop and rock covers from the 50's and 60's. Charlie's solo set is not to be missed! Favour-ites at the Five Bells

Bar and Food

All proceeds to Chelsfield Cricket Club



**Saturday 22nd October  
8.30pm - 11.30pm**

Chelsfield Village Hall - Tickets £4 on the door

## **Contributions PLEASE !**

for the November issue  
[villagevoice@chelsfield.org](mailto:villagevoice@chelsfield.org)

or posted to:  
Chelsfield Village Voice  
2 Bucks Cross Cottages  
Chelsfield Village  
BR67RN

By the 28th October  
please

Visit  
[www.chelsfieldevents.co.uk](http://www.chelsfieldevents.co.uk)

## The Weasel

This month I'm going to be talking about the weasel, which can be distinguished from the stoat by the fact that it is smaller and has no black tip to its tail (typical weight 100g and 20 cm long). Pound for pound, the weasel has a reputation as being one of the most aggressive animals on the planet. In fact the Anglo-Saxon root "weatsop" means "a vicious bloodthirsty animal". It will often take animals larger than itself although its favourite food is the field vole. Weasels are quite secretive but are also more common than many people think. They are active both day and night although I have only seen them during the day. The last time I saw one was about a year ago as it disappeared under a door into Dan Sloan's back yard at the corner of Maypole Rd and Hawstead Lane. In this area I have seen them from World's End Lane to Shoreham. Usually they are running for cover across a road. On one occasion, I saw something going back

and forth into the hedge in front of my cottage. At first I thought it was a rat but a closer look revealed a mother weasel ferrying her young, one by one from one location to another. On another occasion, on a footpath in Shoreham near the chalk cross, I saw a weasel with a mouse in its mouth. A retired gentleman was sitting at a picnic table and he said "you see that weasel, it just ran over my feet" ! It is often the way that predators will forget everything else once they have a meal in their mouth and just head for home throwing caution to the wind.

As a predator, weasels were once persecuted because they would take chickens eggs. Nowa-

days weasels are occasionally known to cause distress to garden owners because they will enter bird boxes. A retired lady I know who lives in Shoreham had a bird box with a camera installed to watch the parents bring up the young. Strangely all but one of the young disappeared and then a few days later that was gone as well. The garden is frequented by weasels, and although a weasel was never caught in the act, the most probable cause of the infanticide was a weasel which is small enough to climb through the opening in the box. I guess he considers it as a convenient lunch box.

*Steve Fuller*

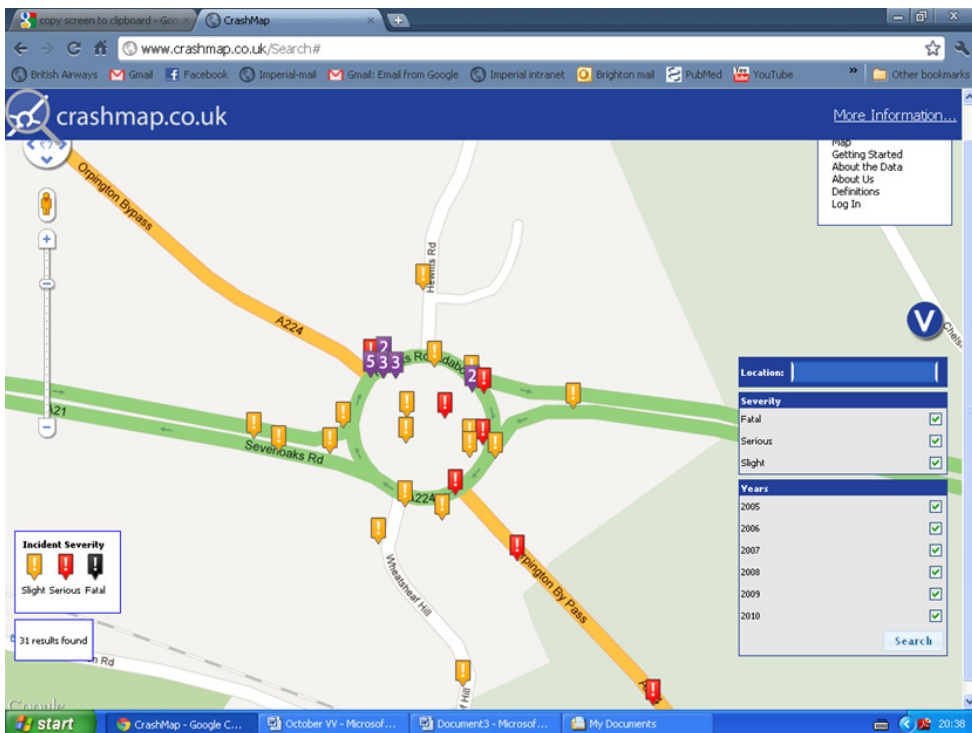


## Road Accident Map

Visit [www.crashmap.co.uk](http://www.crashmap.co.uk) and put in any post code to see a map of logged accidents from 2005 to 2010. It only records those involving emergency services. This map shows 8 accidents at the

Court Rd/Warren Rd junction and 6 at the Court Rd/Church Rd junction of varying degrees of seriousness. The information is not complete as several known accidents seem to

be missing. Expanding the Hewitts roundabout shows a very large number of accidents. This will come as no surprise to those of us who use it on a regular basis.



## A Very Advanced Notice!

This year's Carols from the Bells will be Thursday 15th Dec from 8.15. Let's hope it is not thick snow again! This looks

set to be a very busy and jolly night since both the evening WI and the Masons will be having their Christmas Dinners that

night.

Anyone else play the accordion?

*Phil Lane*

## From Safer Bromley News - August 2011

August saw some unprecedented disorder across London and, though the damage caused to businesses here was less widespread than elsewhere, Bromley was far from unscathed.

Bromley Police and Bromley Council were quick to respond to the isolated mindless damage caused by public disorder in the borough's high streets which resulted in more than 50 businesses sustaining damage and looting on 8 and 9 August. Police numbers were quickly enhanced on our streets with the Council leading on the clean-up, while offering teams of dog handlers that normally provide security in Bromley's parks to work alongside police, adding further welcome visible presence.

Safer Bromley Partnership Chairman Cllr Tim Stevens said: "It is a tribute to our local police and our partnership working, and that includes the involvement of businesses and local law-abiding residents, that Bromley quickly fought back to keep its reputation as one of the

safest boroughs in London. We will do everything we can to prevent our streets and businesses being treated in this way." The Council's town centre managers have been working with businesses to compile information on the damage and identify any real hardship with a view to developing a package of help supported by central government.

*From Cllr Tim Stevens  
Chairman, Safer Bromley Partnership*

I and my fellow councillors were astounded, firstly by the wanton damage inflicted on many areas of London during last month's public disorder, and secondly by the spirit and tenacity of the police and our local communities to rally round and get back to normal as soon as possible.

I should like to commend our local police on their response to what was an appalling situation and join many others in thanking them for the brave actions of their officers.

Praise must also go to the quick thinking actions of the Council's CCTV department and our Environmental Services people for clearing up the mess and removing potential missiles.

It is thanks to the marvellous partnership working we have here that Bromley can reinforce its reputation as a pleasant safe place to live and do business.

*From Charles Griggs,  
Borough Commander*  
Bromley Police response applauded Like many, I was sickened and appalled by what I witnessed on the streets of Bromley on 8 August. As a veteran of Brixton in '81 and Tottenham in '85, I could never have imagined such behaviour in our borough. Since then, we have arrested more than 80 people for offences linked to the violence and disorder. The borough's CCTV is proving invaluable with images so good that people are even surrendering at Bromley having seen themselves in the pa-

pers. I have set up a full time team to hunt down those people who brought violence and terror to our borough and bring them to justice.

I am immensely proud of the dedication, professionalism and bravery displayed by my officers in extremely difficult conditions. I have been overwhelmed

by messages of support and goodwill in recent weeks. It makes me realise how valued we are by our community in Bromley. I am sincerely grateful to residents, businesses, and our partners for their support through these unprecedented and challenging times.

Did you see anything, do you have any

information?

Images of outstanding offenders are in local media and at

[www.met.police.uk](http://www.met.police.uk)

[www.newsshopper.co.uk](http://www.newsshopper.co.uk)

Anyone with information should call the Police Investigation Team on 07769 616 434 or Crimestoppers anonymously on 0800 555 111.

## The Village Gates - Response

Dear Richard Brewin

Thank you for your letter to the Village Voice regarding the Village Gates.

I and your Committee have been working for almost 2 years on various improvements, in conjunction with our 3 Ward Councillors who present our requests to Bromley Council.

This presentation was made following our AGM in November 2010 when the residents had the opportunity to view the various designs of the Gates and voice their opinions.

Our aim is to make Chelsfield Village a safer place without damaging the environment.

The Village Gates and the Double Yellow Lines out-

side and opposite the Five Bells are the beginning of suggested improvements.

Unfortunately, Bromley Council decided where the Gates would be positioned taking into consideration sight lines and damage to the hedgerows.

Cost was a major factor in deciding how many Gates would be erected and it was considered that Chelsfield Lane, which is used as a 'rat run' to avoid the Traffic lights in Court Road and also the junctions of Court Road with Warren Road, Church Road, Bucks Cross Road and Hawstead Lane would be suitable to try and slow the volume of speeding traffic. It was not intended to exclude other Roads / Lanes in the Village.

At our July Committee meeting it was agreed that the Gate in Bucks Cross Road is not in the right position and the signage is wrong.

We will endeavour to get this gate moved but if this is not possible to just show a speed limit of 30mph with repeater signs of 30 mph to the Well Hill junction.

Our next Committee meeting is Wednesday 31st August and this problem will be discussed again.

Thank you for your input, we are pleased to receive residents views and will keep the Village Voice updated.

*Pam Ames*

*Chairman*

*Chelsfield Village Society*



## Chelsfield To Brighton Charity Bike Ride

On Saturday 28<sup>th</sup> August was the inaugural Chelsfield village to Brighton bike ride in aid of Help the Heros and The Not Forgotten Association. 49 cyclists took up this

challenge with all getting to Brighton apart from one bike suffering a mechanical failure. It was a great success and hopefully will become a yearly event. (If your editor can

do it, you can!)

Huge thanks must go to Keith who put in so much time and care to organize this fantastic event which went so smoothly from start to finish!



## Bike Ride Funds Raised

Its taken a few weeks, but we finally got the last of the personal sponsors in. I'm pleased to be able to tell you the Chelsfield to

Brighton bike ride raised **£1731**. This is going to be divided equally between Help for Heroes and Not Forgotten

(another very worthy service charity)

Well done Chelsfield Village!

*Keith Lipscomb*

## Produce Show Report

Numbers of entries and entrants were slightly down on last year at 256 and 42 respectively. We put this down to the late date which coincided with some regular exhibitors' holidays. Next year's date is already booked for an earlier 1<sup>st</sup> September. The decision to mix the children's entries in with the adult classes provided a more satisfactory and space saving set up. In the absence of Leslie Virgo, the Best in Show was awarded by asking all the judges to nominate their preferred winner and coming to a consensus.

Chelsfield Produce show most eye catching front garden display 2011 – Mike Sharp

This year the village is looking much better than might have been expected given the difficult weather conditions. The transformation of the entrance to the village wrought by the rendering and new windows of Gladsholme is a compliment to the new owners, who were busy working on the garden as the judging took place. If the house is anything to go by they will be contenders for the award in future

years. Judging this year was difficult because many other properties stand out. 3 Ivy Cottages has some well tended colour in a small space, June Cottage's basket and window box display is glorious, 7 Orlestone Gardens has some very strong colour while carrying its planting round the corner into Warren Road well, last years winner 5 Orlestone Gardens still has great kerb appeal and the firm hand at 2 Lillys Farm Cottages continues to deliver great structure, colour and a well kept feel. The final garden that stands out, and this year's winner, maintains the summer's riotous theme by providing a rather more welcome riot of its own. So the winner is 1 Ivy Cottages, often a contender for the award, this year it excels with a wonderful diversity of well tended planting with bursts of colour especially in the roses.

The cups were awarded as follows:

**Knox Cunningham Cup**  
Susan Down and Rosemary Barrett  
**Well Hill Cup**  
Coulson Family  
**Ken Pickering Plate**

Best in Show Doreen Graham for her theme cake

**Tom Castleton Rose**

**Bowl** 1 Ivy Cottages

**Allotments Cup** On behalf of Sparkes family

**Children's Cup** Alex Nikodem-Wing

**QEII Golden Jubilee**

**Plate** Alex Nikodem-Wing

**Wine Club Cup** Jill Eldridge

**Country Fare Cup**

Doreen Graham

**Triss and John Cottenden Trophy**  
Susan Down

Comments made by judges, participants and non-participants have been noted. Always make sure your entry is "according to schedule" or it will be disqualified. For those of us who struggled with the gypsy tart recipe (a couple of *reported disasters trying to remove it from the baking dish/tray*), the tart could have been left in the container, but it is best to remove the pastry from the dish/tray after baking blind so that the base does not soften on cooling, then, after baking with the filling the base would have been stronger.

*Our thanks go to the many judges, judges assistants, those who set up on the Friday evening, cleared away after the show, prepared the paperwork, provided refreshments, collected and polished the cups, handled the booking in process, and especially to all who organised the wonderful raffle. I think some people come just for*

the raffle, without which we would have made a substantial loss.

*Catherine Gandolfi*

#### **Show accounts**

Income	
Raffle	£196.00
Entry fees	£75.10
Refreshments	£14.45
Total	£285.55

Expenditure	
Raffle prizes	£86.70
Bulbs for prizes	£57.90
Judges vouchers	£35.00
Judges refreshments	£9.00
Refreshments	£14.45
Hall hire	£65.00
Stationery (table roll etc)	£19.20
Total	£287.25
Net cost of Show	£1.70

## **Faster Broadband for 01959 Numbers**

The latest on faster broadband (10Mb/s) can be found at:  
[http://www.crockenhillbroadband.com/index\\_files/LatestNews.htm](http://www.crockenhillbroadband.com/index_files/LatestNews.htm)

Briefly, Call Flow have installed a cabinet near Hewitts roundabout that will act as a local telephone exchange for broadband for 01959 numbers.

This will bring 10Mb/s broadband to 01959 numbers within 1 mile of the roundabout. In addition, there will be a radio link on the large mobile phone mast at Well Hill. Anyone who case see the top of that mast could have 10Mb/s broadband via a radio link. All these fast broadband links are dependant on the installation of radio links being installed on the Well Hill

mobile phone mast. This has required planning permission which is expected to be granted this month. To find out more, contact Call Flow on 01622 870405 who are referring to this project as Crockenhill Broadband which will bring fast broadband to Crockenhill, Well Hill and Chelsfield.

## **New Burial Ground**

St Martins Church is rapidly running out of space for burials. We do however own the field adjacent to the churchyard, known as The Tryhorn Field. It used to be a piggery and was annexed when the

A224 was built. It was once part of the village recreation ground and cricket pitch before the village was so thoughtlessly severed in 1926 by the bypass. Before then, there was a delight-

ful rural stroll from village to church. The field is at present let out for grazing, but this tennure ends 31st December when we shall apply for planning permission to use this land for burials - always



it's intended use. The Glebe Field, next to the rectory, is also now vacant and is to be im-

proved by harrowing, so that it will be a more fertile meadow next year, and ready not only per-

haps for good grazing, but for use by the church Fete and parking for the Fair.  
*Philip Lane*

## Curiouser and Curiouser Exhibition

19th September 2011 to  
5th November 2011

Explore the cabinet  
of curiosities

### Location:

Bromley Museum,  
The Priory, Church Hill,  
Orpington, BR6 0HH

### Cost: Free

Come and find out more about the museum's collectors and see some of the more unusual items from the museum collection in this cabinet of curiosities.

### Opening times

Monday to Saturday  
10am to 5pm,  
Sundays and  
Bank Holidays, Closed

### Event Organiser:

Bromley Museum  
Service.  
Phone: 01689 873826

### E-Mail:

bromley.museum @bromley.gov.uk



## Bromley Council Wants Your Views

With over £30m to save in the next three years due to cuts in government funding, we are making tough choices about our Council and our borough. Join us at a public meeting so we can hear your views as we make these difficult deci-

sions

Daytime meeting

- 11am-12.30pm: Tuesday 8 November, Civic Centre, Bromley

Evening meetings

- 7.30pm-9pm: Thursday 17 November, Orpington

Methodist Church

Wednesday 23 November, Civic Centre Bromley

Monday 28 November, Citygate Church, Beckenham

Check the website for more information nearer the time.

## **An Early History of Chelsfield Village School - Part 6**

One of the most onerous daily tasks for Mrs. Wickenden in the Village School involved preparing the open coal fires and later on the solid fuel stoves used to heat the classrooms from early times right up until the late 1950s. At the end of each School day the fire-grates and later on solid fuel stoves had to be cleaned out by Mrs. Wickenden and re-laid/made up ready for lighting early next day well before the children and teachers arrived. At the end of each day fresh supplies of coal for each grate and in later years anthracite for the stoves had to be carried inside ready to enable the fires to be kept going easily over the following day. These tasks alone must have been strenuous every day but were only a small part of the overall job to be undertaken. In addition classrooms had to be cleaned and tidied and also corridors, washrooms, outside toilets etc. had to be attended to ready for when School commenced next day. Until at least the late 1950s the School classrooms had bare,

wooden floorboards which had to be swept every day and also regularly scrubbed. In later times lino was available and could be mopped which at least saved the onerous scrubbing necessary up until that period.

A huge debt of gratitude is due to Mrs Wickenden for so many years of hard work which helped make the Village School a place where children were able to achieve a great deal in School work in a clean and well-ordered classroom environment. Mrs Wickenden worked at Chelsfield Village School until reaching retirement age at which stage I am sure that she was quite content to hand over the Caretaker's responsibilities and burdens to her successor!

In more recent years the work of School Caretaker has been undertaken by Mrs. Sylvia Wingrove who worked at the Village School for 23 years. Over

that long period "Sylvie" has naturally been a familiar figure in Chelsfield Village - especially riding to and fro on her motor-cycle! During these later times at least some of the onerous, physical labour as Caretaker has been alleviated by modern technology - especially where heating and lighting are concerned. However, classrooms, corridors, washroom facilities and the outside toilets still have to be cleaned and in Winter time the cold and often back-aching task of clearing snow in the playgrounds always falls to the unfortunate Caretaker! Following on the dedicated work of Mrs Wickenden a considerable debt of gratitude is also due to Mrs Wingrove for her contribution to the well-being of many hundreds of children at Chelsfield Village School whilst working as Caretaker. Unfortunately, recurring ill-health meant that Mrs. Wingrove needed to retire from her position as Caretaker.

In the early years of the Village School and indeed right up until around the

late 1940s there was no provision of Midday meals for pupils. The children attending who came from long distances brought a packed meal to eat during the Midday break and relied on hot meals to be provided at home. If it was convenient and possible in the time available other children walked back home to lunch and then back to School again for the afternoon lessons. In my own family all three "Parkes"

children walked back to the Rock and Fountain at lunch time and then back to School again. I say "walked" but if they dawdled and were late home they needed to do a very fast run back to School to meet the afternoon gate-locking deadline! They certainly hurried home next day!

In the course of the morning period children during the 1920s/30s were able to have a drink of a third of a

pint of milk for a payment of 1d. per day or alternatively Horlicks for ½ d per day. At other times of the day children had access to water per cupful inside the School washroom and later on via drinking fountains in the School playgrounds. No doubt both these facilities were much used at lunch times by girls and boys staying all day in the School premises.

*Carol Margetts*

## Chelsfield - In From The Cold

### **A Guided Walk Around Chelsfield (or something like that) - A New Book by Alan Cheesman.**

This delightful book is a comprehensive walk guide and history in one. Contains dashes of humour and probably not like any guide you've ever read before. Even if you are not really into walking it should prove interesting. Well illustrated with pictures old and new.

### **Chelsfield**

#### *In From The Cold*

*A guided walk around Chelsfield (or something like that)*



**Alan Cheesman**

dren really began, where Miss Read lived when she was a child and where the Lord Mayor of London who defied Parliament in defence of free speech lies buried.

The book (£14.95 inc. postage) is available from The Post Office Windsor Drive, Beckenham Bookshop, Sevenoaks Bookshop, Local Studies, Bromley Library, or from Alan Cheesman, 5 Eton Road, Orpington. BR6 9HD (01689

834338)

Chelsfield is where the story of the Railway Chil-

Any profit from the book will be donated to charity.

## **Superb Music At The Village Hall**

On Saturday 22<sup>nd</sup> October, there will be a fund-raising concert by Willie Austen and his family in aid of Chelsfield Cricket Club. Willie is a well-respected singer on the pub and club circuit and plays a mean 12-string guitar and his kids are equally talented. His eldest son Oli is a superb guitarist, capable of jazzy licks or a bit of fret-melt when required and, remarkably, is an exceptionally good drummer. A highlight of their

occasional appearances at the Five Bells is Willie's daughter Charlotte (Charlie) who fronts a number of bands and has a breathtaking voice which raises the hairs on the back of your neck. Equally capable of belting it out, or singing the softest ballad, Charlie accompanies herself on acoustic guitar and is a quite remarkable talent.

They play a wide range of broadly acoustic covers and never fail to

entertain.

Terry Sparkes is an old friend of the family and has set up this gig to raise money for and raise the profile of the Chelsfield Cricket Club. Peter Townsend will be providing food and there will be a bar. Tickets will be available on the door, priced at £4. Doors will open at 8:30pm – please come along and support the Family von Austen and your local cricket club!

## **Chelsfield Children Leave The Shelter**



This lovely photograph shows children in Chelsfield leaving a bomb shelter in the second World War. They seem to be rather enjoying the 'excitement' too!

*Photo courtesy of  
Philip Lane's  
historical  
photographic  
collection*

## Roadworks - Mayor of London's Letter

Badly managed roadworks are a headache for Londoners and a drain on our economy.

I have just introduced new, tighter standards for roadworks and making it easier for you to tell us when you spot sloppy examples so we can take action to sort it out. If you drive in London, you can report sites that don't come up to scratch at [tfl.gov.uk/roadworks](http://tfl.gov.uk/roadworks)

TfL has pledged that all its roadworks will meet these standards. Any other organisation working on TfL's roads will be monitored using CCTV and traffic police community support officers. Most roads in London are managed by local boroughs, so I'm asking them to meet the standards too. Your reports will be passed directly to the relevant authority, and

my team will work to ensure improvements are made.

We are getting laws put in place by next year that allow us to properly charge for working on our roads - creating a real incentive to do works with minimum disruption. In the meantime, thank you for your help in keeping London moving.

## Bromley's Reel History: Bromley on Film: 1930's - 1980's

5 November 2011

View recently re-discovered films together with a demonstration of film conservation from an expert.

**Location:** Large Hall, Bromley Central Library, BR1 1EX

**Time:** 14:00 - 16:00

**Cost:** Free

An opportunity to view recently digitalised, film from Bromley and the surrounding area from the 1930s to 1980s from within the Bromley Archives collections for the first time in many decades.

Viewing will be accompanied by commentary by local history experts. Preceded by a film conservation demonstration and question and answer session with a professional film archivist.

**Event organiser:**  
Local Studies Library  
**email:**  
[localstudies.library@bromley.gov.uk](mailto:localstudies.library@bromley.gov.uk),  
**Telephone:**  
020 8461 7170





## Memories

I went to prep school at Montclair House School in Orpington. So did the Lander girls, Gillian and Christine. Their father had a farm on Well Hill at a house called Robbins. Every summer some of us children would be invited up at strawberry time to pick the fruit and enjoy a strawberry tea and games hosted by the delightful Ron and Norah Lander. It was such fun. I remember an old tramp who lived in the woods who I presumed helped on the farm. The bus stopped some way from the Hill so we must have had to plod up that hill to get there. But walking and chatting in the 1950's was one of the great pleasures of childhood then and nobody seemed to worry about our welfare.

The Landers were very musical and I recall hearing the piano played by

Ron who later became the resident organist at Chelsfield Methodist Church. I may have had the odd tinkle but piano lessons for me at that time were fairly purgatorial under the dickensian eye of Mr Upstool or Miss Betty Tucker. It was much later in life, around 1958, that I developed this basic tuition into playing for pleasure. So perhaps I should be grateful.

Living as I did in Chelsfield Lane, and schooling in a private school in Orpington, ruled me out of any contact with Chelsfield School. My mother used the village stores, Neals, and despite the frequent omissions and occasional stale packet of Kelloggs, we had a weekly delivery. Miss Burton, who lived in Craven Road, worked in the store and sliced the ba-

con with a giant slicer that went "zing" as it turned. The shop smelled of bacon and paraffin and even in those days of 1950 there were lead acid accumulators charging away on shelves.

Next door, at the Post Office, I would buy sweets, and some people came in for liquorice root, something I was denied because my mother said it was for people with some medical need!

I will rack my brains for other snippets of nostalgia but Dan has my unexpurgated childhood recollections from which he is free to extract and reprint at will. Heaven forbid, but I will have to accept that these outpourings are generally true, if a bit gritty and embarrassing in places!

*Philip Lane*

## Garden Train on YouTube

Hi everybody! I am taking the liberty of forwarding this bit of indulgence. Our

railway featured on a Discovery TV series about 2001 but I had no

idea it was on YouTube. The totally unscripted narration by me and

done without a second take, rambles a bit, and some of the railway looks bit tired. But it's fun and I

am chuffed.

[http://www.youtube.com/watch?v=79noeablvhg&feature=channel\\_video\\_title](http://www.youtube.com/watch?v=79noeablvhg&feature=channel_video_title)

[v=79noeablvhg&feature=channel\\_video\\_title](http://www.youtube.com/watch?v=79noeablvhg&feature=channel_video_title)

*Phil Lane*

## Chislehurst Bridge Road

Chislehurst road bridge is being completely rebuilt due to structural weaknesses which have made it unsuitable for heavy vehicles. The work started this September and will take a year to complete.

From 7 November, the road will be closed and diversions will be in place along Leasons Hill, Cray Avenue and Poverest Road, with no right turns at the junctions with Station Road and Leasons Hill.

Follow the latest updates on our website: [www.bromley.gov.uk/chislehurstbridge](http://www.bromley.gov.uk/chislehurstbridge) or follow us on Twitter [www.twitter.com / chislehurstdrbr](http://www.twitter.com/chislehurstdrbr).

## USEFUL CONTACT NUMBERS

### Bromley Council

Main switchboard:

020 8464 3333

E-mail:

[csc@bromley.gov.uk](mailto:csc@bromley.gov.uk)

Opening hours Monday to Friday 8.30am to 5.30pm

Address: Civic Centre,  
Stockwell Close, Bromley, BR1 3UH

### Reporting Problems to the Council

Can be reported via the CVS website, or if urgent by phone out of hours Emergency Duty Team 020 8464 4848.

### Mobile Library

The mobile library stops outside Chelsfield Village School on Tuesdays between 11:15 and 11:45.

Books can be reserved from here, or over the Internet via the Bromley library website for later picking up from the mobile library.

### Councillors

Julian Grainger

01689 889392

[julian.grainger@bromley.gov.uk](mailto:julian.grainger@bromley.gov.uk)

Samaris Huntington-Thresher

020 8464 3333

[samaris.huntington-thresher@bromley.gov.uk](mailto:samaris.huntington-thresher@bromley.gov.uk)

Russell Jackson

[russell.jackson@bromley.gov.uk](mailto:russell.jackson@bromley.gov.uk)

### Chelsfield Village Society

[cvscontact@gmail.com](mailto:cvscontact@gmail.com)

### Chelsfield Village Voice

[villagevoice@chelsfield.org](mailto:villagevoice@chelsfield.org)

### Chelsfield Primary School

01689 825827

BT Line Faults 0800 800151

Electrical Power Failure (EDF) 08007838866

Thames Water Emergencies 0845 9200800

Transco Gas Emergency Service 0800 111999

Orpington Police Station 1000-1800 Monday-Saturday 0300 1231212

Samaritans 01689 833000

NHS Direct 0845 4647

Safer Neighbourhood Team 020 8721 2605

**Chelsfield Village Hall** (bookings)

01689 855617

**Village Neighbourhood Watch**

Contact

John Leach 07711304965



## DATES FOR YOUR DIARY

---

### WEEKLY EVENTS

---

#### EVERY MONDAY

Chelsfield Methodist Hall  
Windsor Drive

#### Iyengar Yoga Classes

9.30am-11.00am

Suitable for Beginners

Contact Denise on

01689 853215

---

#### EVERY TUESDAY

Brass Crosby Room

#### St Martin's Toddler Group

10.30am-12.00 midday

Contact Sarah Ford:

01689 853415

---

#### EVERY TUESDAY

Five Bells

#### Charity Quiz Night

from 9.00pm

---

#### EVERY WEDNESDAY

#### Hatha Yoga Classes

10.30am-12.00am

Contact Pam Keeper on

01732 458930

---

#### EVERY THURSDAY

St Martin of Tours Church

#### Viva Acappella

Ladies Barbershop Chorus  
Practice

Contact Helen 07984

961696

---

### SPECIAL EVENTS

---

Thursday 13th October  
(2nd Thursday Each Month)  
Brass Crosby Room

#### Crafts For All

Come and Try Your Hand  
at a Range of Crafts  
11.00am

---

Thursday 20th October  
(3rd Thursday Each Month)  
The Brass Crosby Room  
**Local History Group**  
10.15am

---

Saturday 22nd October  
Chelsfield Village Hall

#### Willie Austen & Family

8.30pm-11.30pm

Tickets £4

---

Friday 28th October  
The Five Bells

#### Fish Day

All specials will be fish  
(regular menu still  
available)

---

Friday 28th October  
The Five Bells

#### Live Music Bandanna

Starts 9.00pm  
Pub Closes Midnight

---

Sunday 30th October  
The Five Bells

#### Spook Night

Halloween meets

Guy Fawkes

Starts from 5.30pm

---

Wednesday 2nd November  
The Five Bells

#### Open Mic Night

---

Thursday 3rd November  
The Five Bells

#### Live Jazz-Just Friends Sextet

Starts 8.30pm

---

Wednesday 2nd November  
(1st Wednesday each Month)  
Orpington Village Hall

#### Country Market

10.00am-11.00am

---

Wednesday 2nd November  
(1st & 3rd Wednesdays)  
Parish Room-Skibbs Lane

#### Internet Cafe & Local History Transcription

2.30-4.30pm

---

Wednesday 16th November  
(1st & 3rd Wednesdays)  
Parish Room-Skibbs Lane

#### Internet Cafe & Local History Transcription

2.30-4.30pm

---