



October 2022

Produced by  
*Chelsfield Village Hall*



**QUIZ MONTH in Chelsfield!**  
**See Pages 8 and 9 for full details**

The Newsletter and "What's On" Guide for  
Residents & Friends of Chelsfield Village

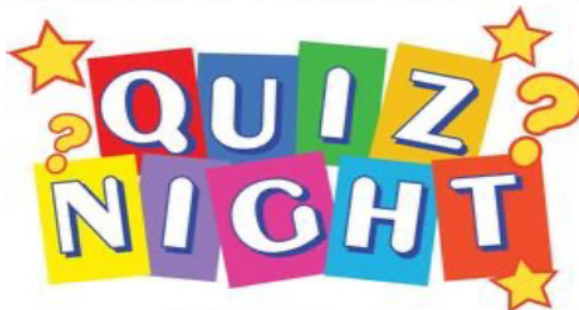
Common Mallow	2
Mutterings from The Millers	4
St Martin's Toddler Group	6
Kent Heights Flower Club	7
The Players QUIZ NIGHT	8
St Martin's QUIZ NIGHT	9
The Produce Show Returns	10
Complaint About R7 Re-Route	12
Village Parking Required	12
Village Ghost Stories 1	13
Funding the Village Voice	14
BoPeep Curry Week	15
St Martin's Services Calendar	16
Chelsfield Casualties of WW2	17
Rotary Club Collection	18
Lyme Disease in Chelsfield	18
Chelsfield Community Café	19
Fran's Blog	19
Come to the Last Cream Tea	20
In Fond Memory	20
Yellow Lines in Warren Road	21
Chelsfield Cricket Photos	21
The Players "Underground"	22
Trading Standards Alerts	23
Dates for your Diary	24
Recycling Collection Days	24

THE CHELSFIELD PLAYERS  
Chelsfield Village Hall, Bucks Cross Road, Chelsfield BR6 7RL

**QUIZ NIGHT**

**FRIDAY,**  
**7 OCTOBER 2022**

**ST. MARTIN OF TOURS, CHELSFIELD**



**SATURDAY, 29TH OCTOBER AT**  
**7.00PM**

**SEND YOUR NEWS,  
ARTICLES,  
PHOTOGRAPHS, AND  
DIARY DATES FOR  
INCLUSION IN THE  
NOVEMBER 2022  
ISSUE TO:**

**chelsfieldvillagevoice  
@gmail.com**

**to arrive on or before  
Thursday 27th October 2022**

## Common Mallow

After four sequential heat-waves making this summer the hottest/driest on record in Britain, we finally had rain at the end of August and it seems to be continuing in dribs and drabs (and sometimes by the bucket load) although whether it will be enough to restock the reservoirs over winter – we will have to see. An observations in early September by my neighbour was of a buzzard strutting around the field opposite our string of cottages. She saw this on a number of occasions and I can only image that it was looking for worms that had come to the surface with the arrival of the rain. The diet of buzzards varies enormously and includes live prey, carrion and yes, earthworms. The worms retreat to deeper depths to stay hydrated during dry weather and this can cause problems for animals that rely on worms for a proportion of their diet, such as badgers which I have seen in my garden during parched periods. So this sighting would

suggest an easy meal was in the offing although I have never seen it myself in 40 years.

On another matter, while driving along Maypole Rd during September I passed a woman and young girl on the side of the road with (presumably) their two pets on leads. However, this wasn't the usual sight of dog owners taking their pooches for their daily exercise, no, these were two very plump sheep sampling the hedge as they went. I thought, great, that's just the sort of Chelsfield eccentricity we need to encourage in the village. I'm hoping to see pet owners walking the likes of; tortoises, pumas and ultimately goldfish next.



So, this month I want to talk about a plant I noted while walking during the hot weather we recently had. At first I thought this plant looked like geraniums that had escaped from somebody's garden but despite never noticing it before I found it in many locations and realised it must be a wild flower. After a quick search I identified it as the Common mallow (*Malva sylvestris*). It's quite a showy plant with both sizeable leaves and flowers and can be found on field edges, roadsides and wasteland. It flowers for a surprisingly long time during summer and only dies away in September. The petals are mauve and the flowers name in French is 'mauve' and is where the English name for the colour comes from.

This plant has long been appreciated for its looks, as a food source and as a source of medicine. It is related to plants such as hollyhock and the cotton plant and common names tend to

relate to the round fruits that it produces: names such as Billy buttons, cheese flowers and cheese-weed.

Mallow is one of those miracle plants where the whole plant is edible—roots, stems, leaves, flowers, and fruits. As far back as 1000 years BC, this plant has been used as a vegetable in some communities and this



practice still exists in parts of Europe where shoots are eaten and mallow leaves are steamed with garlic and tomatoes and eaten as an appetizer or salad. Leaves, when cooked are mucilaginous, similar to 'Lady's fingers' (which is also a mallow family species) which makes it

good for thickening stews or similar dishes. The tender young leaves have one of the highest amounts of vitamin A of any vegetable and are high in protein and a good source of calcium, iron, copper and vitamin C. It can also be used as an ingredient to bulk up a simple salad while the flowers can also be used in salads or as garnish. The seeds, or cheeses (see photo) which taste similar to peanuts, can be eaten while still green as a quick snack.

The confection 'marsh mellow' that we eat today was originally made from the sap of the roots of mallow grown in marshes, hence the name. Though candy makers now use gelatin in place of the sap, the name has stuck since the early 1800s when it was originally introduced to France.

Mallow's holistic medicinal uses have a long history owing to the fact that the plant—in particular, its roots have the mucilage like nature

mentioned previously. This sticky, jelly-like substance is rich in both protein and carbohydrates. The Roman philosopher Pliny wrote that he would mix the sap with water and drink each morning to avoid aches and pains for an entire day. Country lore suggests that another use is that the leaves of this plant can be boiled and the cooled liquid then applied to eyes that are suffering from allergic reactions or teeth to alleviate tooth ache. Another use for the gummy sap was as a poultice for sprains and I found recent records of this solution being used on both horses as well as humans.

However, just to show how contradictory some of this country lore can be, I found references of the juices of common mallow being used as an aphrodisiac, but also being used to promote calm, sober conduct – an anti-aphrodisiac. Take your pick!

*Steve Fuller  
October 2022*

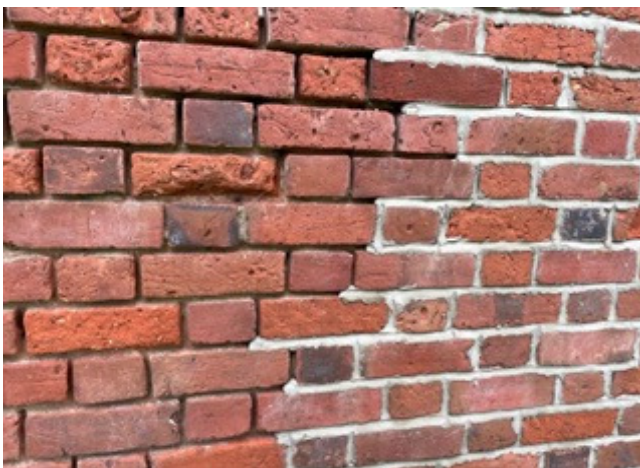
## Mutterings from The Millers

The hay making is all finished, bales stacked and covered if not in the new barn. We are pleased with our first year of only making hay, admittedly we didn't have to dealt with rain but as you know the sun caused a few problems! On reflection, it felt different obviously not combining cereals and a little sad but life moves on. Not having the pressure of a cereal harvest and all that goes with it, was great. Chasing to plant cereal seed again was good too. Peter has planted some new grass seed in two of the fields. You may have seen some bare patches and this was due to slug damage. Oats were planted in 2021 and seemed to have affected the following grass crop in places, which then resulted in the slug problem. Strange but that's farming for you. The new grass seeds have all germinated and growing well so hopefully the whole field next year will be good.

The new machines that we bought this year, a mower conditioner, Tedder and rake did an amazing job and were a dream to use. Our old Tedder/rake was combined so didn't really do either job really affectively, whereas we now have machines to do specific jobs. The rake left no grass whatsoever on the field and pushed into a perfect swath ready for the baler. This year we were advised by our merchant to increase the size of each round bale to 4' 6" instead of the 4' we normally make. Easier for transportation. The first straw load is

going out this week and a few hay bales sold locally. Do you require the odd hay bale?

October is normally another hectic month. Chasing seed supplies and getting it planted if weather is right but now we can get on with hedge cutting as the ground is in good condition and will not be damaged by the tractor. We can cut after the 1st September as the birds are not nesting, Steve will trim the tops and a little of the sides. This will encourage a denser growth which is good for not only birds but mammals too.





As you can see from the photo, Pete continues with pointing the back of the old stables, he is making a great job of it and hopefully this will help maintain the life of the building.

The swallows, although we only had a few this year, are still with us in the last week of September. They had two broods so we have had plenty of chatting birds on our telephone cable. Still hearing a chiff chaff. Although they usually migrate to the Mediterranean and West Africa for the winter, an increasing number of these birds are remaining here. As usual, we have regular sighting of the buzzards and kites. Normally it is their mewing that I hear first and look up to see them. We seem to have more house sparrows and great tits this year, how about you?

When the road was closed and we could have the window opened at night, I was delighted to hear a tawny owl. Steve and I were lucky

enough to see a barn owl from the house quartering over the field back in early summer, what a wonderful sight.



The Chelsfield green had a lovely show of wild flowers again this year although I don't think there were so many pyramid orchids. Plenty of white and red clover, agrimony, bartsia, hawkweed oxtongue and ladies bedstraw. This year I saw a beautiful little white flowered plant which I later identified (I hope correctly) as white bedstraw. I'm sure I haven't seen it before.

This is the month of falling leaves and fruits, as you can see from the picture the walnuts are just opening up.

Hallowtide is on the 31st October so here is this months weather folk lore.

*If ducks slide at  
Hallowtide*

*At Christmastide the  
ducks will swim.*

*If ducks swim at  
Hallowtide,*

*At Christmastide the  
ducks will slide.*

*Chris Miller  
Court Lodge Farm  
October 2022*



## **St Martin's Toddler Group**

September 2022



Dear Parents, Grandparents and Carers,

Here are our dates for the autumn term. We meet in The Brass Crosby Room on Tuesdays during school term time, 10.30am – 12noon, £2 per child/baby which includes refreshments and craft resources. We are a very friendly group so do not worry if you are coming on your own and don't know anyone else. There is no need to book a place, just turn up on the day.

We look forward to seeing you,

Toddler Volunteers:

Jenny, Peter, Mary, Val, Vicki, Nicola and Anne.

**4th & 11th October**

**18th & 25th October – Half Term so no Toddler Group**

**1st, 8th, 15th, 22nd & 29th November**

**6th & 13th December**

### **Contact Details:**

Toddler Group Leader – Jenny Wood

Email: [stmartinstoddlers@gmail.com](mailto:stmartinstoddlers@gmail.com)

Church website: [www.stmartinchelsfield.org.uk](http://www.stmartinchelsfield.org.uk)

## **KENT HEIGHTS FLOWER CLUB**

We meet at Halstead Village Hall, Knockholt Road, TN14 7EX every month from March (plus supper in July) to December (plus Christmas lunch), excluding August, when we hold flower demonstrations and workshops 7.30pm for 8.00pm

**Our next meeting is on Thursday 6<sup>th</sup> October**

**Angela Woodley is the demonstrator  
and the theme 'Ode to Autumn'**

Members £3   Guests £7

Come and join us, have a coffee beforehand, enjoy the entertainment, enter the raffle and you will have a chance to win one of Angela's beautiful arrangements

The November meeting is on Thursday 3<sup>rd</sup> and we are joined by Area Demonstrator Sheila Adby with her demonstration titled 'Piece of Cake'

On 1st December we have a 2 course Christmas lunch with wine, followed by a floral demonstration with Pamela Cantellow and her theme is 'Christmas is Coming'.

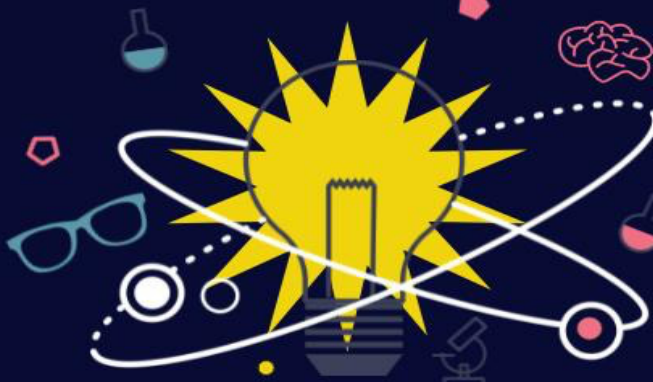
Everyone welcome

For further information contact  
Sally Kemsley on 01959 534406



## THE CHELSFIELD PLAYERS

Chelsfield Village Hall, Bucks Cross Road, Chelsfield BR6 7RL



# QUIZ NIGHT

**FRIDAY,  
7 OCTOBER 2022**



DOORS OPEN AT 7:30 PM - QUIZ STARTS AT 8:00 PM

£7 PER PERSON - TABLES OF UP TO 8 PLAYERS

Can't make a full team? That's OK, join us & form another.

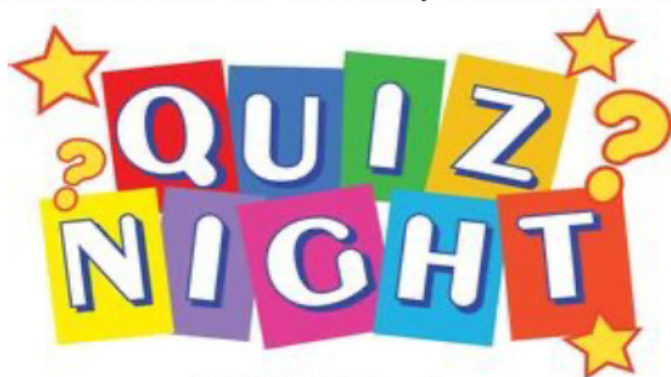
Bar available • Bring your own snacks • Raffle

Reserve your table on 07549 012140 or  
[info@chelsfieldplayers.org](mailto:info@chelsfieldplayers.org)





**ST. MARTIN OF TOURS, CHELSFIELD**



**SATURDAY, 29TH OCTOBER AT  
7.00PM**

**CHELSFIELD VILLAGE HALL, BR6 7RL**

**CORNISH PASTIES (MEAT OR VEGETARIAN)  
AVAILABLE TO ORDER IN ADVANCE - £5  
BRING YOUR OWN DRINKS**

**MAXIMUM 6 PEOPLE PER TEAM  
ENTRY £7.50 PER PERSON**

**Contact Jackie at  
[events@stmartinchelsfield.org.uk](mailto:events@stmartinchelsfield.org.uk)  
to book your table and pasties.  
NB Pasties must be pre-ordered by  
Saturday 22nd October at the latest.**

**Fundraising event for St. Martin of Tours, Chelsfield  
Registered Charity: 1131572**

## A Successful Return for The Produce Show



entries and no entries from allotment holders. It is a shame that neither of these local groups think of themselves as part of the village and in future we aim to make it clear that the show is open to non residents who are associated with village groups.

It was such a delight to see the return of the Chelsfield and Well Hill Produce Show after a gap of 7 years. Thanks to those who expressed an interest in restarting this event and helped it to become a reality. The Show was advertised locally by two splendid new banners designed and ordered by Dave Griffiths.

Many of the old stalwarts were keen to revive their competitive streak were very pleased to see some new faces. There were 36 entrants with a total of 241 entries. We managed to recruit some new villagers to help with the setting up and stewarding and a new set of judges. The biggest disappointment was the lack of children's

The Show certainly attracted a lot of interest on the day when the hall was opened to the public. Hopefully some of these residents will enter next year.

The legendary show raffle raised enough to offset the cost of the show and we successfully adopted the method used by Chelsfield Players where the winning tickets were displayed on the prizes for winners to collect. Local businesses generously donated prizes. There are still a few unclaimed. These will be auctioned off if nobody comes forward. The unclaimed winning numbers are: 713, (Free MOT), 805 (Five Bells voucher) and 830 (gardening gloves).





It was satisfying that the streamlined prize giving and raffle were deemed to be a great improvement.

It was refreshing to see some trophies go to new homes.

The trophies were awarded as follows:

Triss and John  
Cottenden Flower  
Trophy:  
Janet Parsons

Allotments Cup:  
Patricia O'Donnell



Wine Club Tankard:  
Andy Roberts

Country Fare Cup:  
Ruth Cox

Tom Castleton Rose  
Bowl:  
Rosewood Farm

Please contact the Village Voice to claim your prize.

An allotment member brought in a huge pumpkin in a wheelbarrow to raffle in aid of the local foodbank. This raised an impressive £120

Michael Gentry took on the task of judging the front gardens in the village, providing a scroll to be unrolled at the prize giving. It was a bit like the Oscars. "And the winner is....."

Kay and Ade Stone were welcomed back to the village to give the prizes and take on the very difficult task of choosing the Best in Show. They made several circuits of the hall with a clipboard

and before making their decision. Many thanks to Avis Sloan and Ruth Cox for providing the welcome refreshments and members of the Chelsfield Community Cafe baking team for providing some lovely home made cakes.

Thanks to all those involved running and preparing the show, many tasks go unnoticed but all help is much appreciated by the organisers, from preparing the schedule, organising the paperwork, polishing the trophies, assisting the judges, and running the legendary raffle to setting up Friday evening and clearing away afterwards – many hands do indeed make light work.



Children's Cup:  
Max Baker



Well Hill Cup:  
Barbara & Andy Roberts



Ken Pickering Best in  
Show: Sophie Foreman



Knox Cunningham Cup:  
Ruth and Les Cox



QEII Gold Jubilee Plate:  
Janet Parsons



Income  
Entries, raffle and  
refreshments £314.50  
Expenditure  
Prizes, judges' gifts and  
show materials £238.93  
Profit  
£75.57

This does not include  
future income from sale  
of leftover bulbs and  
possible unclaimed prize  
auction.

## More Complaints About the R7 Re-Routing

It is disgusting the way  
residents are treated. The  
R7 bus only goes as far  
as the village now. We

residents who live in the  
Maypole Road and  
Jubilee Road area have to  
walk to the village to get it.

Surely it could come  
round every hour?

*From a local resident*

## Parking Space Needed in the Village

I would like to ask if any  
residents have anywhere  
in the village near the  
school that they wouldn't  
mind sharing with the  
school staff to park their  
cars to ease congestion

around the school/pub  
area?

We have a maximum of  
10 members of staff that  
drive in.  
Thanks,

Kind Regards,  
Flavia Saunders  
Office Manager  
Chelsfield Primary School  
Warren Road  
Orpington, Kent  
BR6 6EP



## Village Ghost Stories - 1

I plan to write a few stories about alleged ghosts in the village and if anybody has any stories they'd like me to publish then please get in touch via the Village Voice and I will do my best to write them up and place them on the pages of the Voice. Now, before we start, I'm not a great believer in these sorts of things but I do think it's interesting to hear the stories associated with old buildings and the hauntings that are supposed to occur within them.

So, to start the ball rolling I thought I'd tell a few stories about Chelsfield Park Hospital where I work on a part time (retired) basis. All hospitals seem to have ghost stories associated with them and Chelsfield Park is no different. The building itself was at one time the stately home of a gentleman called William Waring (who built my farm worker's cottage as it happens), also a distant relative of mine was a footman there as a young man in the 1860s. It eventually became a hotel before being converted to a hospital in the 1980s.

Only one story relates to a member of staff actually seeing anything and this involves a woman in Victorian dress walking into a first floor room. The story is that a rector that lived in the building had murdered his wife and it is her ghost that walks on the first floor but I can't find any evidence of such a rector on the internet so possibly just village gossip! To back up this story I have heard that one winter following heavy snow the head chef took the opportunity to spend the night in one of the rooms rather than drive home and claimed he would never do so again. To support this story there is the tale of the in-house doctor who lives in the building while on duty and one morning complained about the noise from the room below during the night. However, the room in question had been empty that evening. Most stories I know of in the hospital relate to the operating theatre which often seems echoey when the place is empty and you always have the feeling you can faintly hear others moving around in other sections late at night. The most usual events that occur

are more of what might be called poltergeist events and these include automated doors or lift doors that open of their own accord although these can easily be explained as being due to wrongly adjusted sensitivity settings. A more interesting case is one which occurs in the office/sterile storage facility where I work and where we keep instruments required for operations. In this room we have a hand basin with a long force t arm allowing the user to open or close the tap using their forearm. On numerous occasions we find that water is pouring into the basin without anybody in the room, or when people are in another part of the office. Nobody has actually ever seen the arm swing but on at least one occasion my workmate came to work in the morning, unlocked the door to the room and found the tap running. Now maybe it has something to do with a pressure surge within the plumbing that has caused the arm to swing: but who knows.

Another oddity that occurred a number of

times last year happened in anaesthetic room 2 where patients are anaesthetised before entering the operating theatre. This occurrence only ever happened when the room was unused but for a month or two, every couple of weeks the emergency button would be activated leading to medical staff running to respond to an expected heart attack or some similar medical emergency only to find the room empty. On another occasion two members of staff were locking up at the end of the day and

turning off the lights when they heard a voice say "Are you leaving"? So convinced that they were about to lock up with somebody still working that they had to go through the facility to check they were not about to lock somebody in. They even checked the neighbouring x-ray area but that had finished work for the day. One last set of experiences involves the staff manning the area where patients are taken following operations to come around from the effects of the aesthetic, this area is termed the

'recovery area'. On a number of occasions staff have felt a gentle tug of their 'blues' uniforms and on one occasion saw the blues material being drawn away from the body!

That's all for now but if you have any similar stories of interest within any of the village buildings, or elsewhere in the village then please get in touch via the Village Voice email address on the front page.

*Steve Fuller  
September 2022*

## Financial Support for The Village Voice



Once again a big

### THANK YOU

to those of you who have made a donation to support the publication costs of Chelsfield Village Voice, we are just about breaking even so far.

However, we still need support for the printing cost of each issue, so if you are in a position to make a donation we would be most grateful!

Contact either:  
The Village Voice  
([chelsfieldvillagevoice@gmail.com](mailto:chelsfieldvillagevoice@gmail.com))

or The Village Hall  
([cvhlettings@gmail.com](mailto:cvhlettings@gmail.com))  
if you would like to help.

Any donations (cheques) towards the cost of printing the Chelsfield Village Voice should be made payable to

"Chelsfield Village Hall"  
and sent to:  
Peter Gandolfi  
3 Orlestone Gardens  
Chelsfield Village  
Orpington  
Kent  
BR6 6HB

Online donations may be made to:  
Chelsfield Village Hall  
Sort Code: 40-35-30  
Account No: 31172344  
Reference: Village Voice

Any excess donations (we should be so lucky!) will go into the Village Hall general maintenance fund.

*Dan Sloan*

CURRY WEEK  
AT



CELEBRATE NATIONAL CURRY WEEK

Monday 3rd

TO

Saturday 8th October 2022



T  
H  
E

Chicken Curry £13.95  
Goan Prawn Curry £14.95  
Vegetarian Curry available on request

B  
O

All served with rice, poppadom, mango chutney  
& onion salad



P  
E  
E  
P

SIDES

Naan Bread £3.95  
Aubergine Bhaji £3.95  
Lentil Dhal £3.25



The Benefice of  
Chelsfield with Green Street Green  
and Pratts Bottom



## St Martin's Chelsfield & Well Hill – Services – October 2022

All welcome! Come and join us any time. At the moment things might change at short notice so please watch the church website for updates (see link at bottom of page).

### Benefice

Sun 30 Oct **10.00am** *Benefice Holy Communion at All Souls*  
20<sup>th</sup> after Trinity

### St Martin's

Sun 2 Oct 10.00am Family Communion *with baptism* CW : SAJ  
16<sup>th</sup> after Trinity 6.30pm Choral Evensong BCP : SAJ

Wed 5 Oct 9.30am Holy Communion BCP : MG

Sun 9 Oct **10.30am** *Harvest Festival Family Worship* CW : MG  
17<sup>th</sup> after Trinity 6.30pm Sung Eucharist BCP : MG

Wed 12 Oct 9.30am Holy Communion BCP : SAJ

Sun 16 Oct 10.00am Family Communion CW : Rev David Graham  
18<sup>th</sup> after Trinity 6.30pm Choral Evensong BCP : MG

Wed 19 Oct 9.30am Holy Communion BCP : MG

Sun 23 Oct 10.00am Family Communion CW : Father Bob Wallace  
Bible Sunday 6.30pm Choral Evensong BCP : Reader Ken l'Anson

Wed 26 Oct 9.30am Holy Communion BCP : SAJ

Sun 30 Oct a.m. *No morning service at St Martin's*  
20<sup>th</sup> after Trinity 6.30pm Choral Evensong BCP : SAJ

### Well Hill

Sun 9 Oct 10.00am Service of the Word CW : Reader Ken l'Anson

Sun 23 Oct 10.00am Service of the Word CW : Reader Philip Southby

Key: CW – Common Worship, BCP – Book of Common Prayer, SAJ : Rev Susan Atkinson-Jones,  
MG : Rev Michael Gentry

As at 26 Sept 2022



## **Chelsfield's Casualties of World War II - An Update**

You may recall that last month I wrote about Lieutenant John Desmond Needham of the Royal Navy. I was very happy to receive an email from Janet Gould who remembered his mother and who still lives in Park Avenue. She wrote:

*'I grew up at 150 Park Avenue, opposite 161 where Mrs Needham lived. I have vague recollections of a name on the house at one time but it's no longer there and although some houses still retain names, all go by numbers now.*

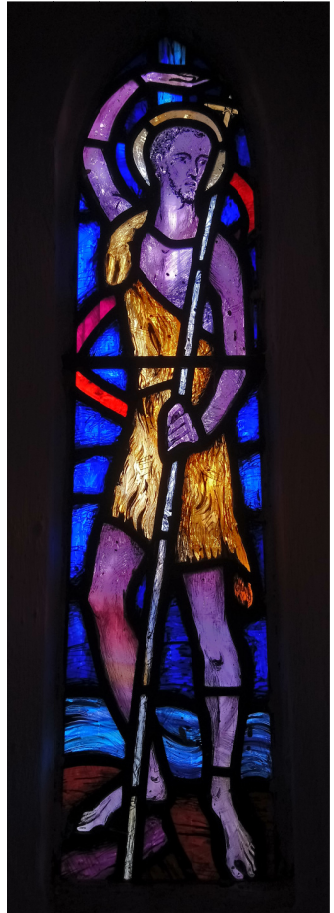
*I remember that Mrs Needham always wore black and to me as a child, seemed very old! (We moved into 150 in 1948 when I was 2). She kept very much to herself but the immediate neighbours looked out for her and I know my mother would speak to her if they met in the street, which wasn't often. I think it was her brother who went to live with her in her later years - he had*

*a blue van I remember! - and when she died, he carried on living there until his death, by which time, the property sadly had become rather unloved.*

*At some point, (possibly following her brother's death) the house was bought by the Foreign Office and was used for families returning from assignments abroad - they usually stayed for 3 years before their next posting.'*

Thank you, Janet, for your insight into the family of one of our servicemen, and the incidental bonus of the house history.

Something else has happened since I wrote the article which proves that you can see things every day and not take them in. In the side chapel at St Martin's we have a stained glass window dedicated to St John the Baptist; it is one of my favourite things because it's a very slim window, so St John has to 'point the way' over his head - I



think he looks like he is disco dancing! As I was moving some chairs in the chapel last week I realised there is a small brass plaque under the window with an inscription dedicating it to John Desmond Needham. It now has

more meaning. I imagine the window was a gift from his mother but I have had a brief look in the parish magazines of the period and found no specific reference to it, only general references to the refurbishment of the chapel that happened in the early 1950s. I will look further into the archives to see what I can find.

In November we will be remembering all those from our parish and beyond who served and died for their country at

our Remembrance Sunday service at 10.45am. Join us if you are able and commemorate them with us.

*Philippa Rooke*  
*pjrooke@hotmail.com*

Stop Press - I've just found this reference in an article that Ann Blatcher gave me about the restoration of the chapel in the late 1940's & early 1950's. Rev C J Ellingham, Hon Curate, wrote '[Moir Forsythe] undertook to make us a window at a cost of

about forty pounds, but when she came to visit the site to see what colours she must harmonise with, she was so excited by the chapel that she offered to make the window free of charge. As it happened the money had been promised by a widow whose naval officer son had been lost at sea.' It was agreed the pledged money would be offset against the cost of the main chapel instead, but the new St John window was dedicated as per his mother's wishes.

## Rotary Club Collection 15th October

The Rotary Club of Orpington will be holding a collection on Saturday

15th October, at Coolings, The Gardener's Garden

Centre, Rushmore Hill, from 11.00 am to 3.00 pm in aid of "End Polio"

## Lyme Disease in Chelsfield

A plot holder on the allotment found that he had a tick bite some weeks ago. He got speedy treatment of a course of antibiotics and a blood test. The test later came back positive, but they were fine because of the antibiotics. They have been put off wearing

shorts on site in the future.

The NHS website has lots of information about Lymes disease. The tick bite is easily recognisable, and must be seen to right away.

There are around 1,500 laboratory-confirmed

cases of Lyme disease in England and Wales each year.

Ticks need to be attached a number off hours to transmit Lyme disease. If you remove a tick which is crawling on your skin or which is not engorged with blood, you will not get Lyme disease.

## Chelsfield Community Cafe

Community Café meets on the 5<sup>th</sup> and 19<sup>th</sup> of October at 2.30pm in Chelsfield Village Hall, all are welcome to come along and join us for tea and cake. On 5<sup>th</sup> October we will be celebrating a harvest theme by raffling a lovely hamper of goodies and testing our knowledge with a quiz on harvest produce!



Looking forward, we will meet on 2<sup>nd</sup> and 16<sup>th</sup> of November. On the 16<sup>th</sup> we will be entertained by a saxophone quartet playing us some of our (and their) favourite music.

We meet in the Village Hall from 2.30pm on the first and third Wednesday of each month to enjoy friendly chat and cake. Come and join us, we can provide transport if needed. Pam Mags & Team

## Fran's Blog

Hi Everyone,

Well, it's been a strange old time, hasn't it? This month's blog is more reflective than informative and here's why:

Amongst the sadness of the Queen's passing, I've been privileged to have been involved in two very special events.

My Flin's Fitness Charity Aerobathon returned this year – an annual event, but the first one in 3 years. Despite concerns about it being the weekend after the Queen's funeral, as well as the oncoming energy crisis, our wonderful health & fitness community dug VERY deep and contributed to a fantastic total for Bromley,

Lewisham & Greenwich Mind, of £3,700! In New York City, each year at this time, the Frank Siller Foundation organise a charity run for the families of the emergency service victims of the 9/11 tragedy. The 5K run is called the Tunnel2Towers, and is in memory of Stephen Siller, Frank's brother, who was an off duty firefighter who ran in full fire kit from his fire station in New Jersey all the way to the twin towers to help his colleagues... and ultimately paid the final sacrifice. The run represents all the heroes who lost their lives that day.

As a retired firefighter myself, I have wanted to do this run (along with my

husband who is still serving) and pay my respects to the service men & women of New York.

It was every bit as emotional as you could imagine and an occasion I will never forget.

The month of September has reminded me that people from all walks of life have exceptional qualities: generosity of body and spirit, humility, pride in their heritage, humour, kindness and above all, a capacity for empathy & caring for one another.

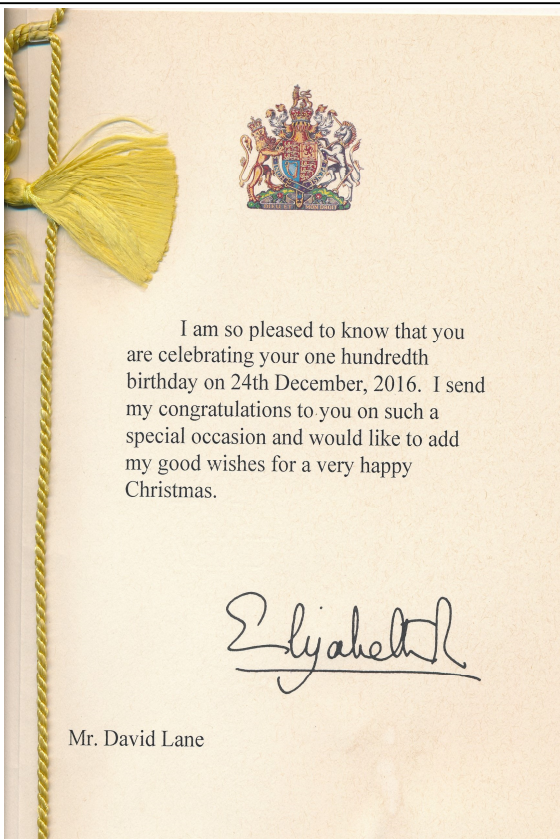
Wishing you all the very best for the month ahead,

Fran, Flin's Fitness  
[www.flinfitness.co.uk](http://www.flinfitness.co.uk)  
 Facebook / Instagram

## Join Us for the Last Cream Tea This Year!

Cream Teas will be served at St Martin's Church in the Brass Crosby Room on Sunday 2nd October from 2.30pm to 4.30pm. This is the last one of the year.

## Nick Lane Fondly Remembers Two Special People



One was indentured to the services of the British people at an early age, the other was delivering a service to provide dentures to the British people of an advancing age - both absolutely fantastic in their different ways!



## Yellow Lines in Warren Road

You may be aware there have been issues recently with our R7 bus having problems getting past parked cars in the village.

The Chelsfield Village Society have been trying to resolve this problem together with Bromley Council's Transport Engagement Team. The proposed solution was to extend the yellow lines as

a single yellow line from Orlestone Gardens towards the Chelsfield Lane junction. This should stop cars parking where the road narrows, resolving the issue. This is the solution that a number of residents have recently had letters about but without specifying the true reason.

Recently there have been a number of occasions

where a bus has either been unable to get through or has tried to, resulting in damage to the bus and parked vehicles. Talking to the bus drivers, like them we are concerned that if this problem is not resolved then TfL may well decide not to run the bus route through the village.

Let's hope for a speedy resolution to this problem.

## Chelsfield Final Cricket Fixture 2022



*Photos Courtesy John Leach*



Chelsfield Village Hall,  
Bucks Cross Road, BR6 7RL  
Box Office-07549 012140



[www.ticketsource.co.uk/chelsfieldplayers](http://www.ticketsource.co.uk/chelsfieldplayers)

**The  
Chelsfield Players  
presents...**

# UNDERGROUND

by Michael Sloan

**1st-3rd December at 8pm**

doors open 7.30pm

**£10 tickets**

**Twelve people trapped in a London Underground train.**

**When the lights come up, a more chilling revelation.**

**There is a murderer aboard and nowhere to run.**

This amateur production is presented by  
arrangement with Josef Weinberger Ltd.

**Directed by David Bacon**



## TRADING STANDARDS ALERT!

### Selling valuables? Take your time

Alert 4.12

4<sup>th</sup> July 2022

If you're thinking of selling personal items that could be valuable to raise some money or to treat yourself, **Bromley Trading Standards** is recommending that you do your homework to help get the best deal:

- As we say with quotes for home improvements, get at least 3 valuations from different businesses who specialise in the type of item(s) that you are interested in selling.
- Know who you are dealing with, which is true of any transaction and not just this theme whether in shops, at events or buying online. Don't rely on a trading name, but who exactly owns the business. It also includes an address for the owner(s), be it a limited company/partnership, the named proprietor or partners.

### Assistance Alarms Don't deal with cold callers

Alert 5.0

5<sup>th</sup> July 2022

**Bromley Trading Standards** is again warning about unexpected telephone calls - in this case where the caller using a UK landline number is asking questions about a type of personal alarm.

**If you receive such a call:** HANG UP immediately – *before* the caller can engage you.

Staying on the line risks revealing your personal details, as well as in some way paying for a device that we would instead advise that you or your relatives, friends, and neighbours research and then source in your own time:

#### Report – protect others by reporting incidents

< **Contact Citizens Advice for help and advice on 0808 223 1133**

< Report scams to Action Fraud on 0300 123 2040 or [www.actionfraud.police.uk](http://www.actionfraud.police.uk)

< If you have given your bank details call 159 to speak directly to your bank [159](https://www.stopscams.uk)  
— [Stop Scams UK](https://www.stopscams.uk)



## Dates For Your Diary

### WEEKLY EVENTS

Every Tuesday  
Five Bells  
**CHARITY QUIZ NIGHT**  
8.30pm

Every Thursday  
The Chelsfield Pub  
**QUIZ NIGHT**  
from 7.30pm

### INDIVIDUAL EVENTS

Saturday 1st October  
Starting St Martin's Church  
**A Circular Walk around Chelsfield**  
From 10.00am

Sunday 2nd October  
Brass Crosby Room  
**Cream Tea**  
2.30pm-4.30pm

Wednesday 5th October  
Chelsfield Village Hall  
**Chelsfield Volunteers COMMUNITY CAFE**  
2.30pm-4.40pm

Thursday 6th October  
Halstead Village Hall  
**Kent Heights Flower Club**  
7.30pm for 8.00pm start

Thursday 6th October  
Five Bells  
**Live Jazz with Just Friends**  
from 8.00pm

Friday 7th October  
Chelsfield Village Hall  
**Chelsfield Players QUIZ NIGHT**  
from 7.30pm (see page 8)

Wednesday 12th October  
Five Bells  
**Open Mic Night**  
From 8.00pm

Sun-Sun 15th-16th October  
Coolings Garden Centre  
**Antiques and Collector Fair**  
10.00am to 4.00pm

Saturday 15th October  
Coolings Garden Centre  
**Rotary Collection to End "Polio"**  
11.00am to 3.00pm

Tuesday 18th October  
Chelsfield Village Hall  
**Evening WI**  
7.30pm-9.30pm

Wednesday 19th October  
Chelsfield Village Hall  
**Chelsfield Volunteers COMMUNITY CAFE**  
2.30pm-4.40pm

Sun-Sun 22nd October  
Coolings Garden Centre  
**Knockholt Farmers Market**  
10.00am to 3.00pm

Wednesday 25th October  
Five Bells  
**Open Mic Night**  
From 8.00pm

Thurs 27th October  
Chelsfield Village Hall  
**Local History Group**  
10.30am-12.00 noon

Saturday 29th October  
Chelsfield Village Hall  
**QUIZ NIGHT**  
from 7.00pm (see page 18)

Thurs - Sat 1st-3rd December  
Chelsfield Village Hall  
**Chelsfield Players Production UNDERGROUND**  
from 8.00pm (see page 22)

## Recycling Bin Collection October 2022

Monday 3rd October  
Monday 10th October  
Monday 17th October  
Monday 24th October  
Monday 31st October  
Monday 7th November

Every week

Every 2 weeks (Mar-Nov)  
every Month (Dec-Feb)

Non-recyclable refuse, Paper & Cardboard, Food Waste  
Plastic, Glass and Tins, Food Waste.  
Non-recyclable refuse, Paper & Cardboard, Food Waste  
Plastic, Glass and Tins, Food Waste.  
Non-recyclable refuse, Paper & Cardboard, Food Waste  
Plastic, Glass and Tins, Food Waste.

Batteries, Small Electrical Items, Textiles (please only present one small transparent bag each week, and re-present the following week if it is not collected)

Green Garden Waste is collected fortnightly or monthly only from households that subscribe (£60 per annum) to the Bromley scheme (Telephone: 0300 303 8658 for advice)